

New record of the nudibranch *Polycera hedgpethi* Er. Marcus, 1964, in South Australia, with a discussion on its occurrence in Australia

Nerida Wilson

Environmental Biology, The University of Adelaide SA 5005 Australia and The South Australian Museum, North Terrace, Adelaide SA 5000, Australia. Email: nerida.wilson@adelaide.edu.au

Polycera hedgpethi was first described from California (Marcus 1964), where it occurs along the entire Californian coastline (Gosliner 1982). Some authors (Gosliner 1982; McDonald 1983) believe it to also occur in the Gulf of California as *P. gnupa* Ev. Marcus and Er. Marcus, 1967, but this remains contested (Miller 2001). After its description, *P. hedgpethi* was quickly recorded from a number of other localities across the globe, often appearing in ports. Its widespread distribution has been interpreted as indicating an invasive species, thought to have spread via fouling on ships (Rudman 1999). This scenario was already suggested for *Thecacera pennigera* by Willan (1976). To date, the Australian National Marine Pest Information System (NIMPIS) suggests that *P. hedgpethi* is native to California, cryptogenic in the Caribbean, and introduced to South Africa, south West Africa, the Mediterranean, Australia and New Zealand (NIMPIS 2002 and references therein). It is also recently reported from Japan (Keiu 2000) and the Atlantic coast of the Iberian Peninsula (Caballer and Ortea 2002). Although California is assumed to be the natural range of *P. hedgpethi*, multiple specimens were known from New Zealand prior to the original species description (Miller 2001).

Polycera hedgpethi in South Australia

The observations presented in this paper confirm the presence of *Polycera hedgpethi* in South Australia. Until now, *P. hedgpethi* was only known from a single, unpublished specimen collected from North Haven boat ramp, Port Adelaide, in 1998 (SAM D12298). In May 2004, a photograph of a specimen was sent to the South Australian Museum from D. Hutson. Mr Hutson confirmed that a population was established at North Haven, and collected a further 5 specimens in July 2004 from the same area (SAM D12299) (Figure 1A). In the same month, Mr Hutson observed many additional specimens on the wreck of the *New Endeavour*, also located in the Port River. Adults, and occasionally egg masses and juveniles, were present at the North Haven boat ramp during observations from May through to

August 2004, and were not seen again until the water temperature dropped in June 2005 (weekly observations by D. Hutson).

This concurs with a suggestion that *Polycera hedgpethi* is found more commonly in winter months (Rudman 1999), although records show it can occur in warmer months as well (Poddubetskaia 2003; Harasti 2004; pers. obs. Melbourne).

Surprisingly to date, there is no information about larval stages and thus potential natural dispersal of this species. Gosliner (1982) briefly mentions white egg ribbons found alongside specimens in South Africa. One individual collected from North Haven also laid an upright, slightly outward-sloping, white spiralled egg mass in the laboratory (Figure 1B,C). Measurements by the author on uncleaved eggs determined that each cell had a mean diameter of $69 \pm 4 \mu\text{m}$ ($n=20$). According to comparisons of egg size and developmental strategies (Thompson 1967; Hadfield and Switzer-Dunlap 1984; Rose 1985), this size is congruent with a planktotrophic strategy. Clearly *P. hedgpethi* possesses swimming larvae, capable of long-distance dispersal.

Polycera hedgpethi in Australia

New South Wales

Polycera hedgpethi was first recorded in Australia in Mallacoota, in northern Victoria, in 1973. A photograph was taken by N. Coleman, and later identified by R. Burn (R. Willan, pers. comm.). It was then identified in Port Hacking, NSW, in 1979 (Coleman 2001). Recent targeted marine pest surveys in port locations in New South Wales (Port Kembla, Botany Bay, Eden) (Pollard and Pethebridge 2002a; 2002b; Pollard and Rankin 2003) did not detect any *P. hedgpethi*. Another survey in the Port of Sydney also did not detect that species (AMBS 2002). However, databased records from the Australian Museum (AM) show specimens were collected in the early 1980's from Botany Bay, Sydney Harbour and Ulladulla. There is also a recent AM record for

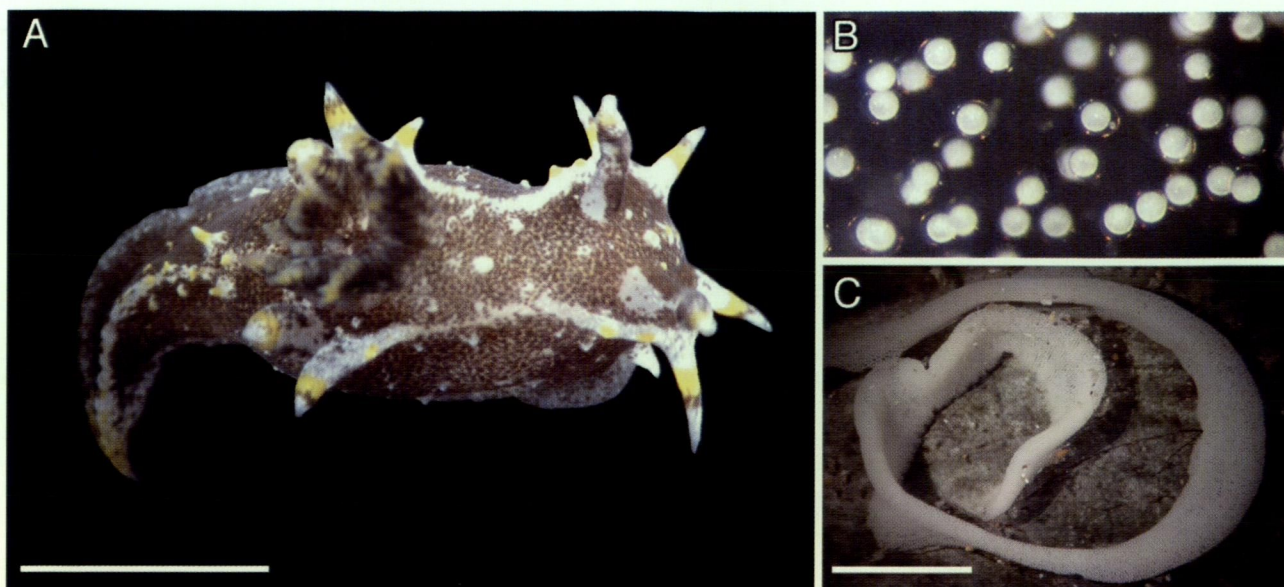


Figure 1 A, *Polycera hedgpethi* (SAM D1299). B, Light micrograph of uncleaved eggs. C, Egg mass. Scale bar = 10 mm.

Sydney Harbour in 1999, and additional recent records exist on the Sea Slug Forum for both Sydney Harbour (Rudman 1999) and southern NSW (Harasti 2004).

Victoria

Similar port surveys have targeted introduced species in Victoria (Hastings, Portland, Geelong, Melbourne, Western Port) (Currie and Crookes 1997; Parry *et al.* 1997; Currie *et al.* 1998; Cohen *et al.* 2001; Parry and Cohen 2001) but these did not detect any specimens of *Polycera hedgpethi*. Numerous specimens have been found in the Port of Melbourne, Port Phillip Bay, Victoria, since that survey was carried out, with the majority of observations occurring at Altona pier (E. Bone, pers. comm.). A post-survey record also occurs at Cunningham pier, Corio Bay, Geelong (SAM D19297). Hewitt *et al.* (2004) list *P. hedgpethi* as present in Port Phillip Bay, but incorrectly cite Burn (1989) as the source of the observation; the species is not mentioned in this account.

Other locations

An additional 29 surveyed ports in WA, SA, TAS, QLD and NT listed in the National Port Survey database (C. Sliwa pers. comm.) did not detect *Polycera hedgpethi*. These included the major ports of Fremantle, Adelaide, Hobart, Brisbane and Darwin, and a range of regional ports throughout. The results for Karumba (Neil *et al.* 2001), Darwin (Russell and Hewitt 2000) and Gove (Neil *et al.* 2003) are published, but many are still pending public release. The majority of these surveys were carried out using the Australian Ballast Water Management Advisory Council (ABWMAC) recommendations on target species, which list *P.*

hedgpethi as a known exotic in its Schedule of Introduced Species (Schedule 3) (Russell and Hewitt 2000).

Although the pest surveys listed above did not discover any specimens of *Polycera hedgpethi*, a specimen was collected from Moreton Bay, Brisbane by T. Gosliner and R. Willan in 1998 (R. Willan, pers. comm.). Also, a single record of *P. hedgpethi* exists from a pier in Albany, southern Western Australia (Wells and Bryce 1993), but no further specimens have since been found in that particular locality, or the entire state (C. Whisson and C. Bryce, pers. comm.). It appears that while marine surveys in port localities are an important and useful tool for detecting some faunal components, they often do not retrieve seasonally common, shallow water, pylon-dwelling, conspicuous nudibranchs. This may be attributed to surveys being carried out in months when seasonal taxa are not present. In this case, *P. hedgpethi* may be anecdotally less likely to be present in warmer months, when approximately two thirds of the surveys examined here were carried out. It seems likely that *P. hedgpethi* is common in certain localities in NSW and Victoria, but less is known about its occurrence in other parts of Australia.

In summary, *Polycera hedgpethi* was first discovered in Australia in north-eastern Victoria, only nine years after its description from its assumed natural range in California. Six years later, it was recorded in southern NSW and quickly thereafter in central NSW and southern Western Australia. In the late 1990's, specimens were discovered in the Ports of Melbourne and Adelaide. Gosliner (1987) also suggested that *P. hedgpethi* may occur naturally in South Africa. Given the length of time that international shipping occurred

prior to the description of *P. hedgpethi*, its natural distribution remains obscure.

ACKNOWLEDGEMENTS

Firstly and foremost, I thank Dennis Hutson for bringing the North Haven population to my attention, and Thierry Laperousaz (SAM) for assistance. Elisa Bone (University of Melbourne), Clay Bryce and Corey Whisson (WAM), Ian Loch (AM), Chris Rowley (MV), Cath Sliwa (CSIRO) and Richard Willan (MAGNT) generously shared specimens and/or information. I would also like to thank the two reviewers who gave suggestions to strengthen this paper.

REFERENCES

AMBS (Australian Museum Business Services) (2002). Port Survey for Introduced Marine Species – Sydney Harbour. Australian Museum, Sydney.

Burn, R. (1989). Opisthobranchs. In S.A. Shepherd and Thomas, I.A. (eds) *Marine Invertebrates of Southern Australia*. 2: 725–788. South Australia Government Printing Division, Adelaide.

Caballer, M. and Ortea, J.A. (2002). Primera cita de *Polycera hedgpethi* Marcus, 1964 (Mollusca: Opisthobranchia) para la Península Ibérica. *Noticiario SEM* 37: 55–56.

Cohen, B.F., McArthur, M.A. and Parry, G.D. (2001). Exotic marine pests in the Port of Melbourne, Victoria. *Marine and Freshwater Resources Institute Report No. 25*: 1–68.

Coleman, N. (2001). *1001 Nudibranchs*. Neville Coleman's Underwater Geographic Pty, Ltd., Springwood.

Currie, D.R. and Crookes, D.P. (1997). Exotic marine pests in the Port of Hastings, Victoria. *Marine and Freshwater Resources Institute Report No. 4*: 1–45.

Currie D.R., McArthur, M.A. and Cohen, B.F. (1998). Exotic marine pests in the Port of Geelong, Victoria. *Marine and Freshwater Resources Institute Report No. 8*: 1–57.

Gosliner, T. (1987). *Nudibranchs of southern Africa. A guide to opisthobranch molluscs of southern Africa*. Sea Challengers, Monterey, Jeff Hamann in association with the California Academy of Sciences, El Cajon and E.J. Brill, Leiden

Gosliner, T.M. (1982). A new record of the nudibranch gastropod *Polycera hedgpethi* Marcus, from the Indian Ocean of South Africa. *Journal of Molluscan Studies* 48: 30–35.

Hadfield, M. and Switzer-Dunlap, M. (1984). Opisthobranchs. In K. Wilbur (ed) *The Mollusca*. 7: 209–350. Academic Press, New York.

Harasti, D. (2004). (February 11) *Polycera hedgpethi* from NSW, Australia [Message in] *Sea Slug Forum*. Australian Museum, Sydney. Available from: <http://www.seaslugforum.net/find.cfm?id=12165> Accessed: 13 April 2005.

Hewitt, C.L., Campbell, M.L., Thresher, R.E., Martin, R.B., Boyd, S., Cohen, B.F., Currie, D.R., Gomon, M.F., Keough, M.J., Lewis, J.A., Lockett, M.M., Mays, N., McArthur, M.A., O'Hara, T.D., Poore, G.C.B., Ross, D.J., Storey, M.J., Watson, J.E. and Wilson, R.S. (2004). Introduced and cryptogenic species in Port Phillip Bay, Victoria, Australia. *Marine Biology* 144: 183–202.

Keiu, S. (2000). *Opisthobranchs of Izu Peninsula*. TBS-Britannica Co. Ltd., Tokyo.

Marcus, E. (1964). A new species of *Polycera* (Nudibranchia) from California. *Nautilus* 77: 128–131.

Marcus, E. and Marcus, E. (1967). American opisthobranch mollusks. *Studies in Tropical Oceanography, University of Miami* 6: 1–256.

McDonald, G.R. (1983). A review of the nudibranchs of the California coast. *Malacologia* 24: 114–276.

Miller, M.C. (2001). Descriptions of the dorid nudibranchs *Polycera hedgpethi* Marcus, 1964 and *P. fujitai* Baba, 1937 in New Zealand. *Journal of Molluscan Studies* 67: 491–499.

Neil, K.M., Hilliard, R.W., Stafford, H., Sheaves, J. and Wiebken, A. (2003). Port baseline survey for introduced marine pests: Port of Gove. *CRC Reef Research Centre and URS Australia report to Alcan Gove Pty Limited*

Neil, K.M., Hoedt, F.E., Sheaves, J., Cruz, J.J. and Choat, J.H. (2001). Survey of the Port of Karumba: port marine baseline surveys and surveys for introduced marine pests. *James Cook University and CRC Reef Research Centre, Townsville, QLD*

NIMPIS (2002). *Polycera hedgpethi* species summary. Hewitt, C.L., Martin, R.B., Sliwa, C., McEnnulty, F.R., Murphy, N.E., Jones, T. and Cooper, S. (eds), National Introduced Marine Pest Information System. Available from: <http://crimp.marine.csiro.au/nimpis> Accessed: 22 August 2004.

Parry, G.D. and Cohen, B.F. (2001). Exotic species established in the Western Port, including an assessment of the status of the exotic species *Corbula gibba*, *Alexandrium* spp., *Gymnodinium* spp. and *Undaria pinnatifida*. *Marine and Freshwater Resources Institute Report No. 45*: 1–27

Parry G.D., Currie, D.R. and Crookes, D.P. (1997). Exotic marine pests in Portland Harbour and Environs. *Marine and Freshwater Resources Institute Report No. 1*: 1–43.

Poddubetskaia, M. (2003). (August 21) *Polycera hedgpethi* from French Mediterranean [Message in] *Sea Slug Forum*. Australian Museum, Sydney. Available from: <http://www.seaslugforum.net/find.cfm?id=10791> Accessed: 13 April 2005.

Pollard, D.A. and Pethebridge, R.L. (2002a). Report on Port Kembla Introduced Marine Pest Species Survey. *NSW Fisheries Final Report Series No. 41*: 1–73.

Pollard, D.A. and Pethebridge, R.L. (2002b). Report on Port of Botany Bay Introduced Marine Pest Survey. *NSW Fisheries Final Report Series No. 40*: 1–69.

Pollard, D.A. and Rankin, B.K. (2003). Port of Eden Introduced Marine Pest Species Study. *NSW Fisheries Final Report Series No. 46*: 1–67.

Rose, R.A. (1985). The spawn and development of twenty-nine New South Wales opisthobranchs (Mollusca: Gastropoda). *Proceedings of the Linnean Society of New South Wales* 108: 23–36.

- Rudman, W.B. (1999). (July 23) Comment on I found my first sea slug! by Peter Firminger [Message in] *Sea Slug Forum*. Australian Museum, Sydney. Available from: <http://www.seaslugforum.net/find.cfm?id=1105> Accessed: 13 April 2005.
- Rudman, W.B. (1999). (July 22) *Polycera hedgpethi* Marcus, 1964 [In] *Sea Slug Forum*. Australian Museum, Sydney. Available from: <http://www.seaslugforum.net/factsheet.cfm?base=polyhedg> Accessed: 3 November 2004.
- Russell, B.C. and Hewitt, C.L. (2000). Baseline survey of the Port of Darwin for introduced marine species. *Report for Department of Transport and Works, Northern Territory Government* 1-97.
- Thompson, T.E. (1967). Direct development in a nudibranch, *Cadlina laevis*, with a discussion of developmental processes in Opisthobranchia. *Journal of the Marine Biological Association of the U.K.* 47: 1-22.
- Wells, F.E. and Bryce, C.W. (1993). *Sea Slugs of Western Australia*. Western Australian Museum, Perth.
- Willan, R.C. (1976). The opisthobranch *Thecacera pennigera* (Montagu) in New Zealand, with a discussion of the genus. *The Veliger* 18: 347-352.

Guide to Authors

Subject Matter:

Reviews, observations and results of research into all branches of natural science and human studies will be considered for publication. However, emphasis is placed on studies pertaining to Western Australia. Longer papers will be considered for publication as a Supplement to the *Records of the Western Australian Museum*. Short communications should not normally exceed three typed pages and this category of paper is intended to accommodate observations, results or new records of *significance*, that otherwise might not get into the literature, or for which there is a particular urgency for publication. All material must be original and not have been published elsewhere.

Presentation:

Authors are advised to follow the layout and style in the most recent issue of the *Records of the Western Australian Museum* including headings, tables, illustrations and references.

The title should be concise, informative and contain key words necessary for retrieval by modern searching techniques. An abridged title (not exceeding 50 letter spaces) should be included for use as a running head.

An abstract must be given in full length papers but not short communications, summarizing the scope of the work and principal findings. It should normally not exceed 2% of the paper and should be suitable for reprinting in reference periodicals.

The International System of units should be used.

Numbers should be spelled out from one to nine in descriptive text; figures used for 10 or more. For associated groups, figures should be used consistently, e.g. 5 to 10, not five to 10.

Spelling should follow the *Concise Oxford Dictionary*.

Systematic papers must conform with the International Codes of Botanical and Zoological Nomenclature and, as far as possible, with their recommendations.

Synonymies should be given in the short form (taxon, author, date, page) and the full reference cited at the end of the paper. All citations, including those associated with scientific names, must be included in the references.

Manuscripts:

The original and two copies of manuscripts and figures should be submitted to the Editors, c/- Publications Department, Western Australian Museum, Francis Street, Perth, Western Australia 6000. They must be in double-spaced typescript on A4 sheets. All margins should be at least 30 mm wide. Tables plus heading and legends to illustrations should be typed on separate pages. The desired position for insertion of tables and illustrations in the text should be indicated in pencil. Tables should be numbered consecutively, have headings which make them understandable without reference to the text, and be referred to in the text.

High quality illustrations are required to size (16.8 cm x 25.2 cm) or no larger than 32 cm x 40 cm with sans serif lettering suitable for reduction to size. Photographs must be good quality black and white prints, not exceeding 16.8 cm x 25.2 cm. Scale must be indicated on illustrations. All maps, line drawings, photographs and graphs, should be numbered in sequence and referred to as Figure/s in the text and captions. Each must have a brief, fully explanatory caption. On acceptance a computer disk containing all corrections should be sent with amended manuscript. The disk should be marked with program (e.g. Word, WordPerfect, etc).

In papers dealing with historical subjects references may be cited as footnotes. In all other papers references must be cited in the text by author and date and all must be listed alphabetically at the end of the paper. The names of journals are to be given in full.

Processing:

Papers and short communications are reviewed by at least two referees and acceptance or rejection is then decided by the editors.

The senior author is sent one set of page proofs which must be returned promptly.

The senior author will receive fifty free offprints of the paper. Additional offprints can be ordered at page proof stage.