

Catalogue –  
clothing fasteners and adornments from  
the VOC wrecks *Batavia*, *Vergulde  
Draeck*, *Zeewijk* and *Zuytdorp*.



Michelle Bester  
University of Western Australia  
Supervised by Dr Deb Shefi and Theresa Archer  
WA Museum  
April 2024

Catalogue—Department of Maritime Heritage, Western  
Australian Museum, No. 349.



WESTERN  
AUSTRALIAN  
MUSEUM

# ACKNOWLEDGEMENTS

I would like to thank the people who made it possible for me to participate in a curatorial internship with the Western Australian Museum and complete this special project. I wish to thank the team at the WA Shipwrecks Museum for welcoming me into their space, and without whom this project would not have been completed. I am particularly indebted to Dr Deb Shefi and Theresa Archer for their continued support, wisdom, and understanding while supervising me during this placement, and would like to thank them for taking the time to share their knowledge with me.

I also extend my thanks to Dr Clarissa Ball and Arvi Wattel at the University of Western Australia, who facilitated my work placement with the museum through the Curatorial Studies Internship program. Lastly, thank you to Lohrrin Foley; without you it wouldn't have happened.

Cover page image: Pelsaert silver, pendant from scabbard shoulder belt. Reg number BAT3594.

# TABLE OF CONTENTS

Introduction.....	3
Catalogue notes.....	4
Database overview.....	4
Registration numbers and site codes.....	4
Materials.....	4
Site type.....	5
Description.....	5
Dimensions.....	5
Photographs .....	5
Structure.....	5
<i>Batavia</i> .....	6
Buckles, belts and riders.....	7
Buttons.....	21
Fasteners.....	53
Hooks and eyelets.....	54
Hasps and clasps.....	56
Pendants (Pelsaert silver).....	60
<i>Vergulde Draeck</i> .....	61
Buckles, belts and riders.....	62
Buttons.....	74
Hooks and eyelets.....	76
Hasps.....	79
<i>Zeewijk</i> .....	81
Buckles.....	82
Buttons.....	91
Fasteners.....	101
<i>Zuytdorp</i> .....	102
Buckles.....	103
Buttons.....	107
Clasps.....	112
Appendix.....	113

# INTRODUCTION

Over the course of three months, this project was undertaken with the aim to audit, organize and make accessible artefacts from the four Dutch East India Company (VOC) shipwrecks managed by the Western Australian Museum. The project focused on clothing-related items, such as buckles, buttons and other fastening objects.

Four Dutch ships have been wrecked off the Western Australian coast while making the journey to the Dutch East Indies for trade: *Batavia* (1629), *Vergulde Draeck* (1656), *Zuytdorp* (1712), and *Zeewijk* (1727). Formal expeditions at the wreck sites were carried out by the WA Museum from as early as the 1970s, producing a plethora of archaeological material. For *Zuytdorp*, whose crew was lost and never heard from again, these personal clothing items may represent the only surviving physical evidence of the individuals who boarded the ill-fated ship. For all of the VOC wrecks, these objects provide invaluable information about what these passengers wore during their voyages, and in the broader scheme, provides insight into the mechanics and aesthetics of clothing from the 17<sup>th</sup> and 18<sup>th</sup> century. Analyzing this assemblage of items allows us to discover very personal details about the people who were lost to the sea and contribute to the piecing together of their stories.

Since being excavated decades ago, many of these artefacts have had minimal investigative work done due to a shortage of potential researchers, and a lack of groundwork done to compile and organize the relevant collections. Thus, this project aimed to complete an audit of relevant artefacts within the Dutch collections so that researchers can easily access the collections and accompanying data, such as measurements and photographs.

This project will also support the ARC Linkage Project ‘Mobilising Dutch East India Company collections for New Global Stories’ (LP210300960), led by University of Western Australia. This scheme aims to kindle international research partnerships and developments in Australian industry-backed research, with the goal of creating a deeper shared understanding of VOC shipwreck material globally. Ensuring that collections are organized, up to date, and readily available to academics creates the fundamental groundwork for these larger research proposals. Providing the foundations for future analysis and study of these collections will help bring these objects out of storage and into the light, where the stories of those aboard the VOC ships can be shared and appreciated by many.

This catalogue is a product of the work done during a UWA Work Integrated Learning Placement (WILP), which provides students with the opportunity to gain degree credits through internships with various companies, institutions and programs. The opportunity to learn from experts and work alongside them in the museum field is an invaluable experience that allows students to gain hands-on experience in collections management, while also fostering the sharing of knowledge between the current and future generations of industry professionals.



# CATALOGUE NOTES

## *Database overview*

The contents of this catalogue has been retrieved from the artefact database containing collections managed by the Maritime Heritage Department at the WA Museum. Objects in this catalogue are listed under the 'Clothing' category within the database, and exclude wholly textile items including fabric, leather, lace and wool. Included are objects that have been interpreted as personal clothing items and accessories recovered from the four VOC ships and their associated sites. While the database includes clothing-related objects currently housed at other museums, the scope of this catalogue only covers objects housed at the WA Shipwrecks Museum, both in storage and on display, at the time of publication. Collections housed at the Shipwrecks Museum are indicted in the database by the museum code 'MA' for those in storage, and 'MMU'/'MMV' for those displayed in the upper gallery. Each entry in this catalogue includes:

- Registration number
- Material
- Site type (Terrestrial or Marine)
- Description
- Dimensions
- Photographs

The following glossary will supplement the catalogue by providing information about the sites, object types, and materials while acting as a key to interpret abbreviations and codes used in the database.

## *Registration numbers and site codes*

Artefacts are searchable in the database by their unique registration number which includes the site code, number, and occasionally additional alphabetical denotations such as A,B,C, etc.

Site codes included in this catalogue are as follows:

- I. BILS - Beacon Island Land Site
- II. BAT - Batavia
- III. BCI - Beacon Island
- IV. LI - Long Island
- V. GT - Vergulde Draeck
- VI. ZT - Zuytdorp

BILS, BAT, BCI and LI represent sites that are associated with *Batavia* and its survivors and are therefore all included under the '*Batavia*' section of the catalogue.

## *Materials*

The material makeup of an object in the database is indicated by a specific code to categorize it. The materials that appear in this catalogue include:

Code	Material	Count
0	Unknown	8
3	Non-ferrous	2
4	Miscellaneous	2
8	Ferrous	5
32	Copper/brass	155
34	Lead	1
41	Animal	10
44	Glass	3
46	Rope/leather/etc.	1
51/35	Silver	3
-	Unspecified	2

Objects for which the material is marked as 'Unknown' are often those that are still encased in mineral concretions.

Objects with 'Unspecified' materials have not been assigned a material code in the database.

Site type

The type of site at which an object was found is indicated as being either marine or terrestrial. This information is usually specified in the ‘Site location’ section of the database, and occasionally in the ‘Notes Finding’ section.

In some cases, the site type is not specified but can be inferred from the site registration code. Objects registered under Beacon Island Land Site (BILS), Beacon Island (BCI), and Long Island (LI) are all identified as terrestrial finds by default. Those objects where the site type is not stipulated are denoted as ‘Unconfirmed’.

Description

Descriptions for each object are transcribed directly from the database. Some descriptions include supplementary information about materials. This may include specifying the exact material used (for example ‘bone’ within the broader ‘Animal’ category) or identifying the smaller components of an object which are composed from varying materials.

Dimensions

Object dimensions were measured using electronic calipers and are recorded in millimeters. The abbreviations used to denote measurements are read as follows:

- Ht: Height
- Lg: Length
- Wd: Width
- Wt: Weight
- DIA: Diameter
- HO: Hole diameter
- HD: Head diameter

For some broken objects whose pieces can be placed together in the likeness of its original form, approximate measurements are taken to give an indication of the size of the whole object. Measurements are always maximum values for the whole object.

Photographs

Each object has been photographed to ensure that as many details and angles as possible are captured. For

some objects, only one photo is possible as the artefact is attached to a backboard and fixed in place. This can mostly be seen for fragile objects such as belts with leather fragments, and items which have been fixed in place for the purpose of display.

This catalogue does not include all the photos that exist for each object, rather only two views are attached. More photos can be accessed by request.

STRUCTURE

The following catalogue is organized firstly by wreck, and secondly by type of object:

- I. Batavia
  - I. Buckles, belts and riders
  - II. Buttons
  - III. Fasteners
  - IV. Hooks and eyelets
  - V. Hasps and clasps
  - VI. Pendant (Pelsaert silver)
- II. Vergulde Draeck
  - I. Buckles, belts and riders
  - II. Buttons
  - III. Hooks and eyelets
  - IV. Hasps
- III. Zeewijk
  - I. Buckles
  - II. Buttons
  - III. Fasteners
- IV. Zuytdorp
  - I. Buckles
  - II. Buttons
  - III. Clasps

# *Batavia*

## 1629

# Belts, buckles and riders

BILS 245



**Material:** Non-ferrous

**Site type:** Terrestrial

**Description:** Buckle, : 21.5 x 27 mm  
w/sliding chape. Coarse weave  
fabric/webbing attached.



**Dimensions:** Lg: 27.2mm, Wd:  
22mm.

## BAT 3956



**Material:** Copper/brass

**Site type:** Terrestrial

**Description:** 1 x copper alloy buckle, c. 1844,  
see Cunnington & Cunnington, p.42.

1 x .copper alloy nail w timber attached,  
probably from a c. 19th C clinker-built boat.



**Dimensions:** Buckle - Lg: 31.09mm,  
Wd: 21.44mm, Th: 3.55mm

Nail - Lg: 39.46mm, Wd: 26.67mm,  
Th: 7.44mm.

## BAT 3321



**Material:** Copper/brass

**Site type:** Terrestrial

**Description:** Buckle, brass, square.



**Dimensions:** Lg: 24.16mm, Wd:  
24.31mm.

## BAT 3198



**Material:** Copper/brass

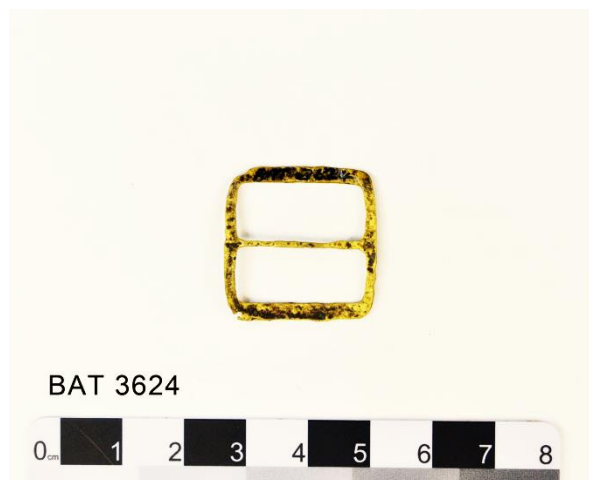
**Site type:** Marine

**Description:** Buckle, brass, square, misshapen.



**Dimensions:** Lg: 27.81mm, Wd: 20.61mm.

## BAT 3624



**Material:** Copper/brass

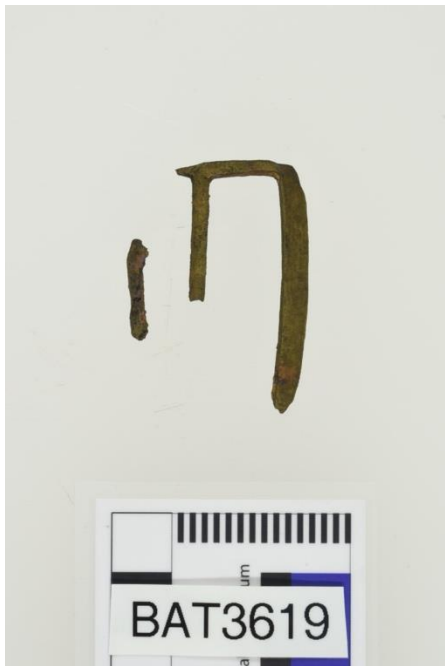
**Site type:** Unconfirmed

**Description:** Buckle, brass, square.



**Dimensions:** Lg. 23mm, Wd. 25mm.

## BAT 3619



**Material:** Copper/brass

**Site type:** Unconfirmed

**Description:** Buckle, brass. eroded, fragment, square.



**Dimensions:** Lg: 41.81mm, Wd: 21.44mm, Th: 1.89mm.

## BAT 3498



**Material:** Copper/brass

**Site type:** Unconfirmed

**Description:** Buckle, fragment, brass.



**Dimensions:** Prong frag - Lg: 26.94mm, Wd: 8.81mm  
Frame frag - Lg: 26.33, Wd: 10.48mm.

## BAT 3463



**Material:** Copper/brass

**Site type:** Unconfirmed

**Description:** Buckle, ornate, part only, 1/2.



**Dimensions:** Lg: 44.75mm, Wd: 35.96mm, Th: 4.19mm.

## BAT 3476C



**Material:** Copper/brass

**Site type:** Unconfirmed

**Description:** Buckle, prong only.



**Dimensions:** Lg: 23.75mm, Wd: 13.51mm.



## BCI 68



**Material:** Copper/brass

**Site type:** Terrestrial

**Description:** Buckle.



**Dimensions:** Lg: 33.55mm, Wd: 30.15mm, Th: 1.95mm.

## BAT 3511



**Material:** Copper/brass

**Site type:** Marine

**Description:** Buckle, brass.



**Dimensions:** Lg: 60.44mm, Wd: 47.35mm, Th: 2.20mm.

## BAT 3847



**Material:** Copper/brass

**Site type:** Terrestrial

**Description:** Buckle, square, brass.



**Dimensions:** Lg: 24.06mm, Wd:  
23.47mm.

## BAT 3002



**Material:** Copper/brass

**Site type:** Unconfirmed

**Description:** Buckle, square,  
broken, brass.



**Dimensions:** Lg: 25mm, Wd:  
25mm.

## BAT 340



**Material:** Copper/brass

**Site type:** Terrestrial

**Description:** Buckle, square, brass.

**Dimensions:** Lg: 45mm.



## BAT 4583AB



**Material:** Copper/brass

**Site type:** Unconfirmed

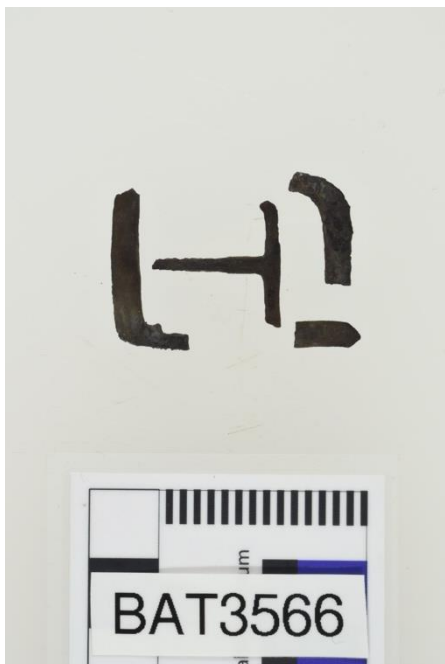
**Description:** Buckles, brass, with shoe leather BAT 4583.



**Dimensions:** A: Lg: 24.47mm, Wd: 25.37mm.

B: Lg: 24.99mm, Wd: 25.15mm.

## BAT 3566



**Material:** Copper/brass

**Site type:** Unconfirmed

**Description:** Buckle, square, broken, brass.



**Dimensions:** Lg: 31.32mm, Wd: 22.85mm, Th: 2.06mm

## BAT 361



**Material:** Copper/brass

**Site type:** Unconfirmed

**Description:** Buckle, brass.



**Dimensions:** Lg: 37 mm, Wd: 42mm.

## BAT 3346



**Material:** Copper/brass

**Site type:** Unconfirmed

**Description:** Buckle, square with pin, brass.  
Eroded and thin in places.



**Dimensions:** Lg: 28mm, Wd:  
25mm, Wt: 3.4g.

## BAT 495



**Material:** Copper/brass

**Site type:** Unconfirmed

**Description:** Buckle, brass.



**Dimensions:** Wt. 3g, Lg. 25mm,  
Wd. 26mm, Th. 2mm.

## BAT 3511A



**Material:** Copper/brass

**Site type:** Marine

**Description:** Belt rider, brass.



**Dimensions:** Total Wt: 16.5 g, Lg: 45.58mm, Wd: 13.37mm, Th: 2.43mm.

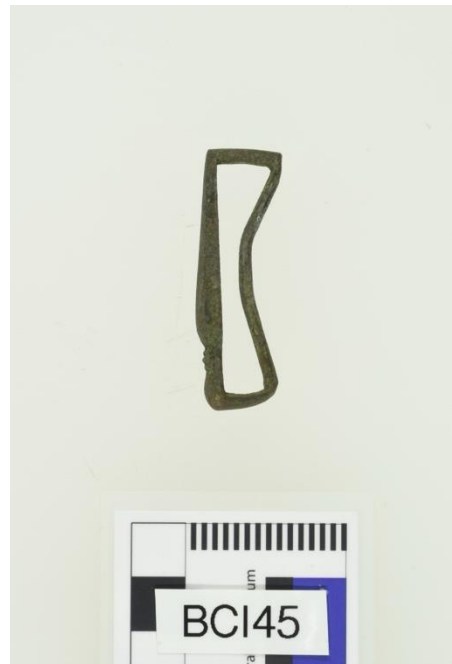
## BCI 45



**Material:** Copper/brass

**Site type:** Terrestrial

**Description:** Brass/Copper buckle.



**Dimensions:** Lg: 48.35mm, Wd: 15.20mm, Th: 3.75mm.

## BAT 3747



**Material:** Copper/brass

**Site type:** Unconfirmed

**Description:** Belt rider, brass.



**Dimensions:** Lg: 26.46mm, Wd: 6.14mm.

## BCI 3043



**Material:** Copper/brass

**Site type:** Terrestrial

**Description:** Belt rider, brass, fragmented (2 pieces).



**Dimensions:** Lg: 42.26mm, Wd: 8.66mm.



## BAT 3504B



**Material:** Copper/brass

**Site type:** Marine

**Description:** Belt rider: brass. 1 of 2.



**Dimensions:** Lg: 28.18mm, Wd: 6.18mm.

## BAT 3845



**Material:** Copper/brass

**Site type:** Terrestrial

**Description:** Belt ornament, brass.



**Dimensions:** Lg: 48mm, Wd: 13.75mm, Th: 8.70mm.



# BAT 3902ABC



**Material:** Rope/leather/etc.

**Site type:** Unconfirmed

**Description:** Strap w. brass buckle + carrier  
(B). C = 3 leather fragments from strap.

**Dimensions:** Buckle (A): Lg: 60.41mm, Wd: 47.77mm, Th: 4.71mm

Carrier (B): Lg: 46.58mm, Wd: 8.59mm, Th: 2.88mm

Largest leather frag (C): Lg: 65.58mm, Wd: 34.26mm, Th: 4.01mm.



# Buttons.

## BILS 383



**Material:** Copper/brass

**Site type:** Terrestrial

**Description:** Brass button, dome-shaped w/  
loop shank. Diam. 8 mm; Ht. 13 mm (Shank  
broken, temporarily repaired w/UHU).



**Dimensions:** DIA: 7.41 mm; Th:  
4.42mm, Ht: 13 mm.

## BILS 230



**Material:** Copper/brass

**Site type:** Terrestrial

**Description:** Copper alloy button, hollow cast, dome-shaped w/ line decoration. Possible Fe shank.



**Dimensions:** DIA: 11.42mm, Th: 6.7mm.

## BILS 6507



**Material:** Miscellaneous

**Site type:** Terrestrial

**Description:** 4-hole sew-through button, possible modern plastic.



**Dimensions:** DIA: 12.85mm, Th: 2.45mm.

## BAT 3623



**Material:** Copper/brass

**Site type:** Unconfirmed

**Description:** Armor rivet, brass and black button.



**Dimensions:** Large brass button - DIA: 9.53mm, Ht: 5.77mm. Small brass button - DIA: 7.62mm, Ht: 6.33mm. Shiny black button - DIA: 8.51mm, Th: 6.25mm. Matte black button - DIA: 8.90mm, Th: 7.77mm.

## BILS 382



**Material:** Brass

**Site type:** Terrestrial

**Description:** Brass button. Dome-shaped w/ loop shank (broken).



**Dimensions:** DIA: 7.45mm, Th: 4.81mm, Ht: 9.56mm.

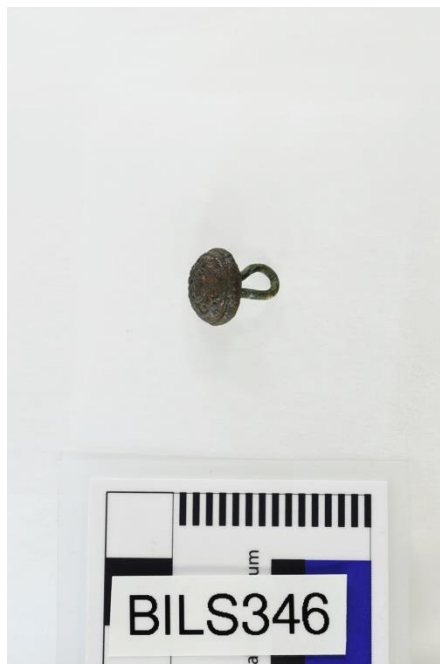
## BILS 346



**Material:** Copper/brass

**Site type:** Terrestrial

**Description:** Brass circular hollow-moulded button w/ loop shank. Decorated.



**Dimensions:** DIA: 12mm, Ht: 14mm.

## BAT 3476A



**Material:** Copper/brass

**Site type:** Marine

**Description:** Button.

**Dimensions:** DIA: 4.22mm, Lg: 8.01mm.

## BILS 1019



**Material:** Ferrous

**Site type:** Terrestrial

**Description:** Button.



**Dimensions:** Lg: 23.82mm, Th:  
11.62mm.

## BILS 1020



**Material:** Ferrous

**Site type:** Terrestrial

**Description:** Button.



**Dimensions:** DIA: 17.02mm, Th:  
11.44mm.

## BILS 1021



**Material:** Ferrous

**Site type:** Terrestrial

**Description:** Button.



**Dimensions:** DIA: 18.27mm, Th:  
13.42mm.

## BILS 1023



**Material:** Ferrous

**Site type:** Terrestrial

**Description:** Button.



**Dimensions:** DIA: 13.60mm, Th:  
10.01mm.

## BILS 1031



**Material:** Unknown  
**Site type:** Terrestrial  
**Description:** Button.



**Dimensions:** DIA: 12.00mm, Th: 10.55mm.

## BILS 1037



**Material:** Unknown  
**Site type:** Terrestrial  
**Description:** Button.



**Dimensions:** DIA: 15.89mm, Th: 12.16mm.



## BILS 1046



**Material:** Unknown  
**Site type:** Terrestrial  
**Description:** Button.



**Dimensions:** DIA: 12.79mm, Th: 12.09mm.

## BILS 547



**Material:** Non-ferrous  
**Site type:** Terrestrial  
**Description:** Button.



**Dimensions:** DIA: 10.59mm, Th: 6.54mm.

## BILS 548



**Material:** Non-ferrous

**Site type:** Terrestrial

**Description:** Button.



**Dimensions:** DIA: 10.84mm, Th:  
5.89mm.

## BILS 553



**Material:** Non-ferrous

**Site type:** Terrestrial

**Description:** Button.



**Dimensions:** DIA: 10.83mm, Th:  
5.90mm.

## BILS 554



**Material:** Non-ferrous

**Site type:** Terrestrial

**Description:** Button. Still in  
concretion.



**Dimensions:** Concretion: Lg:  
24.45mm, Th: 9.50mm.

## BILS 665



**Material:** Non-ferrous

**Site type:** Terrestrial

**Description:** Button.



**Dimensions:** DIA: 10.30mm, Th:  
7.06mm.

## BAT 4501



**Material:** Glass

**Site type:** Unconfirmed

**Description:** Button - obsidian.



**Dimensions:** DIA: 12.78mm, Th: 9mm.

## BAT 3922



**Material:** Copper/brass

**Site type:** Terrestrial

**Description:** Button?



**Dimensions:** DIA: 17.49mm, Ht: 7.35mm.

## BILS 386



BILS386; BUTTON:  
Job No 22/90 (AT)

**Material:** Non-ferrous

**Site type:** Terrestrial

**Description:** Button (?) in situ. Fine weave fabric remains.



BILS386; BUTTON:  
Job No 22/90 (AT)

**Dimensions:** DIA: 10.7mm, Th:  
5.46mm.

## BILS 1032



**Material:** Unknown

**Site type:** Terrestrial

**Description:** Button (?)



**Dimensions:** DIA: 11.85mm, Th:  
8.87mm.

## BILS 1033



**Material:** Unknown  
**Site type:** Terrestrial  
**Description:** Button (?)



**Dimensions:** DIA: 14.69mm, Th: 9.66mm.

## BILS 1038



**Material:** Unknown  
**Site type:** Terrestrial  
**Description:** Button (?)



**Dimensions:** DIA: 20.05mm, Th: 14.854mm.

## BILS 1039



**Material:** Unknown  
**Site type:** Terrestrial  
**Description:** Button (?)



**Dimensions:** DIA: 18.86mm, Th: 13.32mm.

## BILS 666



**Material:** Unspecified  
**Site type:** Terrestrial  
**Description:** Button 2. Still in concretion.



**Dimensions:** Concretion - DIA: 15.02mm, Th: 10.45mm.



## BILS 384



**Material:** Non-ferrous

**Site type:** Terrestrial

**Description:** Button found in situ.



**Dimensions:** DIA: 10.71mm, Th:  
5.67mm.

## BILS 387



**Material:** Non-ferrous

**Site type:** Terrestrial

**Description:** Button in situ. Fabric remains. (?)  
Covered metal button.



**Dimensions:** DIA: 11mm, Th:  
5.12mm.



## BILS 385



BILS385; BUTTON:  
Job No 22/90 (AT)

**Material:** Non-ferrous

**Site type:** Terrestrial

**Description:** Button in situ. Fragments of coarse weave fabric present.



BILS385; BUTTON:  
Job No 22/90 (AT)

**Dimensions:** DIA: 10.7mm, Th:  
5.14mm.

## BILS 1045



**Material:** Unknown

**Site type:** Terrestrial

**Description:** Button or coral.



**Dimensions:** DIA: 12.75mm, Th:  
10.55mm.

## BILS 588



**Material:** Non-ferrous

**Site type:** Terrestrial

**Description:** Button SK8.



**Dimensions:** DIA: 10.40mm, Th:  
6.93mm.

## BILS 389



**Material:** Non-ferrous

**Site type:** Terrestrial

**Description:** Button w/ fabric covering.  
Broken shank end.



**Dimensions:** DIA: 10.6mm, Th:  
5.67mm.

## BAT 4219



**Material:** Glass

**Site type:** Unconfirmed

**Description:** Button, black (obsidian).



**Dimensions:** DIA: 13.05mm, Th:  
7.78mm.

## BILS 5831



**Material:** Glass

**Site type:** Terrestrial

**Description:** Button, black glass dome/  
spherical shape with wire loop.



**Dimensions:** DIA: 10.53mm, Th:  
6.97mm, Ht: 12.66mm.

## BAT 4219



**Material:** Glass

**Site type:** Unconfirmed

**Description:** Button, black (obsidian).



**Dimensions:** DIA: 13.05mm, Th: 7.78mm.

## BAT 3467



**Material:** Copper/brass

**Site type:** Marine

**Description:** Button, brass.



**Dimensions:** DIA: 16.10mm, Ht: 9.96mm.

## BAT 3703



**Material:** Copper/brass  
**Site type:** Unconfirmed  
**Description:** Button, brass.



**Dimensions:** DIA: 17.89mm, Th: 12.09mm, Ht: 15.45mm.

## BAT 496A



**Material:** Copper/brass  
**Site type:** Marine  
**Description:** Button, brass.



**Dimensions:** DIA: 14.84mm, Ht: 15.28mm, HO: 3.97mm.

## BAT 3596



**Material:** Copper/brass

**Site type:** Unconfirmed

**Description:** Button, brass - patterned.



**Dimensions:** DIA: 14.92mm, Ht: 8.67mm.

## BAT 3702



**Material:** Copper/brass

**Site type:** Marine

**Description:** Button, brass.



**Dimensions:** DIA: 14.84mm, Ht: 15.28mm, HO: 3.97mm.

## BAT 3772



**Material:** Copper/brass

**Site type:** Unconfirmed

**Description:** Button, brass/copper.



**Dimensions:** DIA: 11.04mm, Th: 6.05mm.

## BILS 5836



**Material:** Copper/brass

**Site type:** Terrestrial

**Description:** Button, copper alloy domed shape with wire loop.



**Dimensions:** DIA: 10.74mm, Ht: 12.84mm, HO: 3.37mm.



## BILS 5820



**Material:** Copper/brass

**Site type:** Terrestrial

**Description:** Button, copper alloy, domed shape, decorated with loop. SK18.



**Dimensions:** DIA: 10.55mm, Ht: 15.58mm, HO: 3.76mm.

## BAT 3761



**Material:** Copper/brass

**Site type:** Unconfirmed

**Description:** Button, decorated, brass.



**Dimensions:** DIA: 9.65mm, Th: 5.89mm.



## BAT 3791



**Material:** Copper/brass

**Site type:** Unconfirmed

**Description:** Button, decorated, brass



**Dimensions:** DIA: 11.60mm, Th:  
5.20mm.

## BAT 4032



**Material:** Miscellaneous

**Site type:** Unconfirmed

**Description:** Button, w. wire threads.



**Dimensions:** DIA: 13.19mm, Th:  
3.71mm.

## BILS 6232

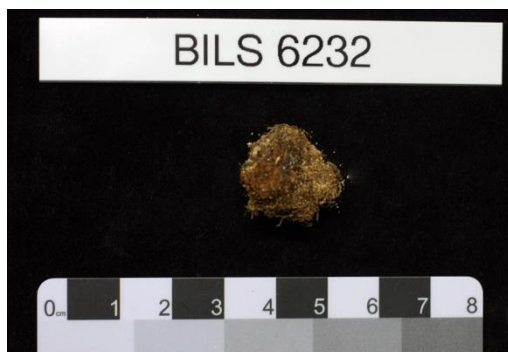


**Material:** Copper/brass

**Site type:** Terrestrial

**Description:** Button. Copper.

**Dimensions:** Lg: 15mm, Wd: 11mm.



## BILS 6234



**Material:** Copper/brass

**Site type:** Terrestrial

**Description:** Button. Copper.

**Dimensions:** Lg: 15mm, Wd: 15mm.



## BILS 388AB



**Material:** Non-ferrous

**Site type:** Terrestrial

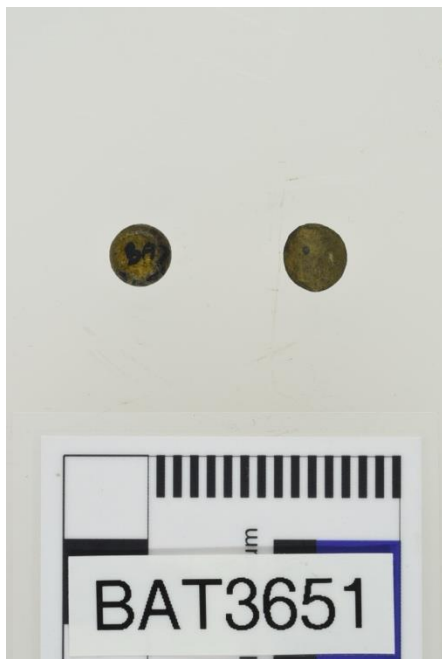
**Description:** Buttons (2) w/ fabric cover. In situ.



**Dimensions:** A - DIA: 10.72mm, Th: 6.23mm.

B - DIA: 10.46mm, Th: 5.80mm.

## BAT 3651



**Material:** Copper/brass

**Site type:** Unconfirmed

**Description:** Buttons (armor rivet), + 1 lead filled.



**Dimensions:** B1 - DIA: 7.29mm, Th: 4.25mm, B2 - DIA: 7.64mm, Ht: 5.73mm.

## BAT 3629C



**Material:** Copper/brass

**Site type:** Unconfirmed

**Description:** Buttons, dome shaped with shank (Total 12).



**Dimensions:** Wt: 2.1 - 2.5g.

Total Wt of 12: 11 g.

Avg. DIA: 10 mm.

## BAT 3620



**Material:** Copper/brass

**Site type:** Unconfirmed

**Description:** Buttons, lead filled.



**Dimensions:** B1 - DIA: 8.04mm,

Th: 5.03mm. B2 with loop - DIA:

10.01mm, Ht: 11.89mm, HO:

3.66mm.

## BAT 3633



**Material:** Copper/brass

**Site type:** Unconfirmed

**Description:** Buttons, lead filled.



**Dimensions:** Whole button - DIA: 16.08mm, Th: 14.30mm.

## BAT 3589C



**Material:** Copper/brass

**Site type:** Unconfirmed

**Description:** Buttons, small domed shaped w/ brass loop shank.



**Dimensions:** B1 - DIA: 8.17mm, Th: 5.36mm. B2 - DIA: 7.23mm, Th: 4.05mm.

## BAT 3589B



**Material:** Copper/brass

**Site type:** Unconfirmed

**Description:** Buttons, small, dome-shaped with loop shanks, brass.



**Dimensions:** DIA: 75mm, 80mm. Wt: 1.1g, 1.3 g.

## BAT 3629B



**Material:** Copper/brass

**Site type:** Unconfirmed

**Description:** Buttons, small, dome-shaped with loop shanks, brass; one with pattern, is slightly eroded, pattern not clear.



**Dimensions:** Av. DIA: 10 mm, Wt: 2.1 g; 2.3 g; 2.3 g; 2.5g.

## BAT 3476B



**Material:** Copper/brass

**Site type:** Marine

**Description:** Head.



**Dimensions:** DIA: 7.99mm, Th: 4.97mm.

## BAT 3790



**Material:** Copper/brass

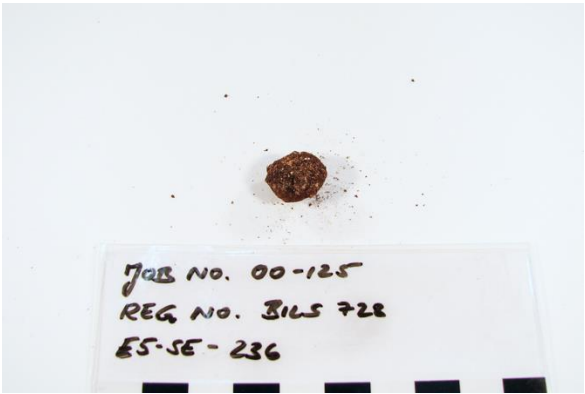
**Site type:** Unconfirmed

**Description:** Knob, brass, button like.



**Dimensions:** DIA: 6.72mm, Ht: 11.13mm.

BILS 728



**Material:** Copper/brass

**Site type:** Terrestrial

**Description:** Phalanges (2). SK 8 Button (1)  
directly underneath northern end of ulna &  
radius. Still in concretion.

**Dimensions:** Concretion - DIA: 13.79mm,  
Th: 9.30mm.



# Fasteners.

## BILS 43



**Material:** Unspecified

**Site type:** Terrestrial

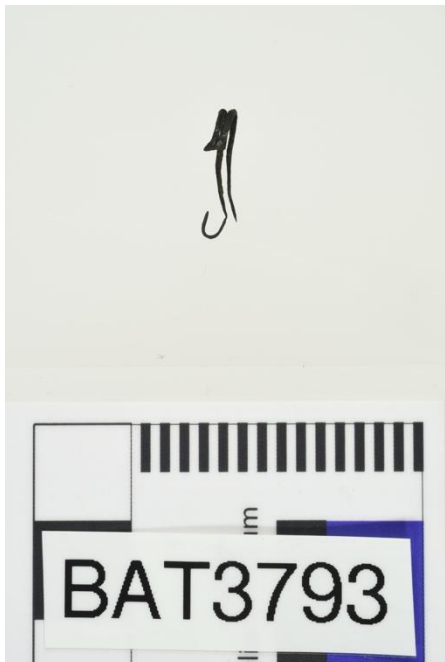
**Description:** Metal stud-type fastening.



**Dimensions:** HD: 10.81mm, DIA:  
7.69mm, Ht: 9.34mm.

# Hooks and eyelets.

BAT 3793



**Material:** Copper/brass

**Site type:** Unconfirmed

**Description:** Hook, brass, dress type.



**Dimensions:** Lg: 13.16mm, Wd: 4.85mm.

# BILS 6063



**Material:** Non-ferrous

**Site type:** Terrestrial

**Description:** Metal. Eyelet.

**Dimensions:** DIA: 0.9cm, HO: 0.3cm.



# Hasps and clasps.

BAT 3240



**Material:** Copper/brass

**Site type:** Terrestrial

**Description:** Hasp, brass, heart-shaped w/ hole at top.

**Dimensions:** Lg: 36.86mm, Wd: 26.31mm, Th: 2.37mm, Wt: 4.6g.

## BAT 3848



**Material:** Copper/brass

**Site type:** Terrestrial

**Description:** Hasp, heart-shaped ornate fitting, brass.



**Dimensions:** Lg: 25.2mm, Wd: 17.6 mm, Th: 2.3mm, Wt: 3.4 g.

## BAT 3711



**Material:** Copper/brass

**Site type:** Unconfirmed

**Description:** Hasp, heart-shaped, brass.



**Dimensions:** Lg: 32.66mm, Wd: 28.78mm, HO: 3.24mm.

## BILS 5784



**Material:** Ferrous

**Site type:** Terrestrial

**Description:** Clasp, clothing, iron



**Dimensions:** DIA: 16.58mm, HO: 7.80mm, Lg: 22.27mm, Th: 4.64mm.

## BAT 3711



**Material:** Copper/brass

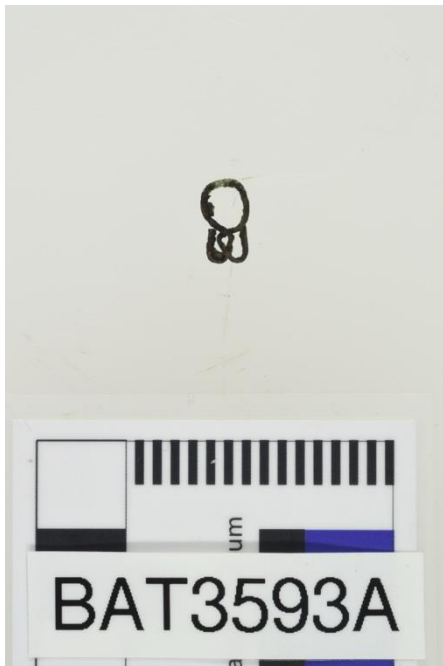
**Site type:** Unconfirmed

**Description:** Hasp, heart-shaped, brass.



**Dimensions:** Lg: 32.66mm, Wd: 28.78mm, HO: 3.24mm.

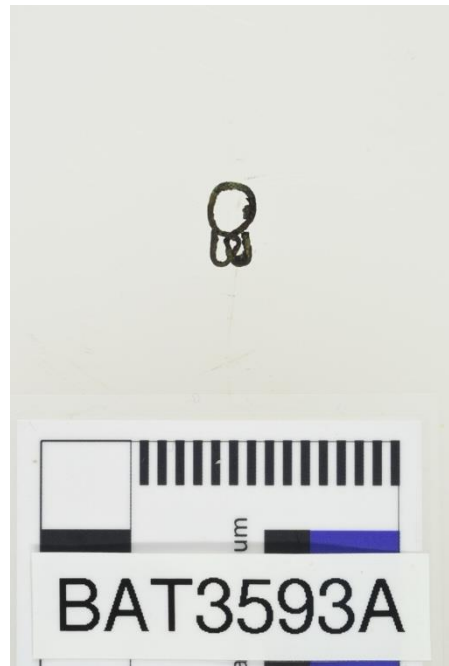
## BAT 3593A



**Material:** Copper/brass

**Site type:** Unconfirmed

**Description:** Wire clasp, brass.



**Dimensions:** Loop DIA: 5.55mm,  
Lg: 9.58mm.

## BAT 3587



**Material:** Copper/brass

**Site type:** Unconfirmed

**Description:** Wire, clasp like, brass, coiled.



**Dimensions:** Loops DIA: 4.74mm,  
3.82mm, Lg: 14.74mm, Th:  
1.72mm.

# Pendants.

BAT 3594



**Material:** Silver

**Site type:** Marine

**Description:** Pendant from scabbard shoulder belt (for attaching small objects or as an ornament – bandeliersluiting).



**Dimensions:** Lg: 60mm, Wd: 17mm, Ht: 97mm



*Vergulde Draeck*  
(Gilt Dragon)  
1656

# Belts, buckles and riders.

GT 3147



**Material:** Copper/brass

**Site type:** Unconfirmed

**Description:** Baldric Buckle w/ leather fragments.

**Dimensions:** Buckle - Lg: 58.30mm,

Wd: 36.69mm, Th: 2.85mm

Belt (largest frag) - Lg: 49.69mm,

Wd: 25.97mm.

## GT 1346



**Material:** Copper/brass

**Site type:** Unconfirmed

**Description:** Baldric Buckle, brass, small w/ leather.



**Dimensions:** Buckle - Lg: 33.44mm, Wd: 33.14mm, Th: 2.14mm.

Leather (largest piece) - Lg: 53.15mm, Wd: 41.45mm.

## GT 3107



**Material:** Copper/brass

**Site type:** Unconfirmed

**Description:** Buckle (baldric type) w/leather, and heart-shaped hasp.

Small frag: MAC-076 T07

**Dimensions:** Length: 50 mm

Leather strap Wd. 41.12mm

Buckle: Lg. 50.57mm, Wd. 45.10mm, Th. 3.52mm

Hasp: Lg. 36.15mm, Wd. 24.37mm, Th. 2.88mm.



## GT 3103



**Material:** Copper/brass

**Site type:** Unconfirmed

**Description:** Buckle w/ leather,  
Baldric

**Dimensions:** Buckle - Lg: 34.49mm,  
Wd: 34.31mm, Th: 2.76mm.

## GT 3136



**Material:** Copper/brass

**Site type:** Unconfirmed

**Description:** Buckle w/leather strap,  
Baldric.

**Dimensions:** Buckle Lg: 50.53mm,  
buckle Wd: 44.26mm, leather strap  
Wd: 33.27mm.

## GT 3102



**Material:** Copper/brass

**Site type:** Unconfirmed

**Description:** Buckle w/leather,  
Baldric.

**Dimensions:** Buckle - Lg: 60.06mm,  
Wd: 36.38mm, Th: 3.41mm  
Belt (largest frag) - Lg: 83.37mm.

## GT 3138A



**Material:** Copper/brass

**Site type:** Unconfirmed

**Description:** Buckle w/leather, Baldric.



**Dimensions:** Buckle - Lg: 57.23mm, 32.78mm

Belt (largest frag) - Lg: 50.64mm, Wd: 27.32mm.

## GT 1347



**Material:** Copper/brass

**Site type:** Unconfirmed

**Description:** Buckle, Baldric w/leather.



**Dimensions:** Buckle - Lg: 58.30mm, Wd: 25.50mm, Th: 2.26mm



## GT 1348



**Material:** Copper/brass

**Site type:** Unconfirmed

**Description:** Buckle, brass,  
w/leather strap.

**Dimensions:** Buckle - Lg:  
49.59mm, Wd: 44.65mm,  
Leather strap - Wd: 33.64mm.



## GT 3104



**Material:** Copper/brass

**Site type:** Unconfirmed

**Description:** Buckle w/leather,  
Baldric.

**Dimensions:** Buckle - Lg: 33.30mm,  
Wd: 33.21mm. Th: 3.07mm  
Belt - Lg: 116.74mm, Wd:  
52.08mm.

## GT 3105



**Material:** Copper/brass

**Site type:** Unconfirmed

**Description:** Buckle, Baldric  
w/leather.

**Dimensions:** DIA: 39.11mm, Th:  
4.15mm, Wt: 13.5g



## GT 1351



**Material:** Copper/brass

**Site type:** Unconfirmed

**Description:** Buckle, baldric, brass.

**Dimensions:** Lg: 59.53mm, Wd:  
37.64mm, Th: 2.54mm, Wt: 12.0g



## GT 3108



**Material:** Copper/brass

**Site type:** Unconfirmed

**Description:** Buckle, Baldric, brass.



**Dimensions:** Lg: 61.74 mm, Wd: 38.24mm, Th: 2.43mm.

## GT 848



**Material:** Copper/brass

**Site type:** Marine

**Description:** Buckle, brass, w/ pin.



**Dimensions:** Lg: 33.15mm, Wd: 33.52mm, Th: 2.22mm.



## GT 887



**Material:** Copper/brass

**Site type:** Marine

**Description:** Buckle, brass.

**Dimensions:** Lg: 50.98mm, Wd:

41.55mm, Th: 2.34mm, Wt: 12.9g.



## GT 3106



**Material:** Copper/brass

**Site type:** Unconfirmed

**Description:** Buckle, brass, round  
w/ pin.

**Dimensions:** DIA: 39.60mm, Th:  
4.15mm.



## GT 3084



**Material:** Copper/brass

**Site type:** Unconfirmed

**Description:** Buckle, broken, brass.



**Dimensions:** Large - Lg: 31.79mm,

Wd: 20.34mm, Wt: 1.8g

## GT 3130



**Material:** Copper/brass

**Site type:** Unconfirmed

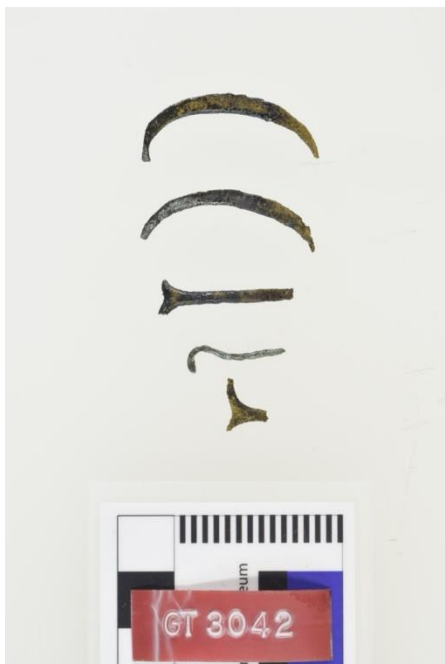
**Description:** Buckles, brass, no pins.



**Dimensions:** Av. Lg: 32.59mm, Av.

Wd: 34.23mm, Total Wt: 6.4g.

## GT 3042

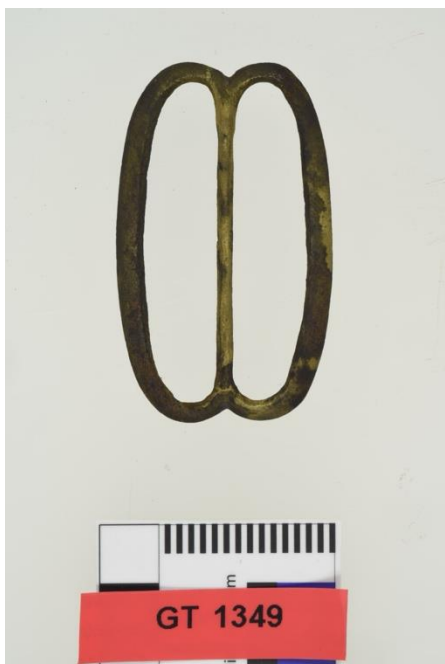


**Material:** Copper/brass  
**Site type:** Unconfirmed  
**Description:** Buckle, pieces.

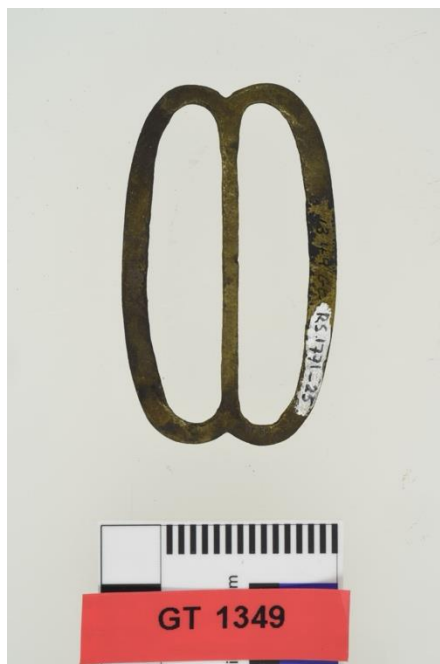


**Dimensions:** Whole buckle Lg: 32.25mm, Wd: 30.29mm, Th: 1.74mm.

## GT 1349



**Material:** Copper/brass  
**Site type:** Unconfirmed  
**Description:** Buckle, with chape.



**Dimensions:** Wt: 13g, Ht: 3m, Wd: 36mm, Lg: 60mm, Th: 5mm.

## GT 3197



**Material:** Lead

**Site type:** Terrestrial

**Description:** Belt rider (?), rectangular. Lead or pewter.



**Dimensions:** Lg: 22mm, Wd: 12mm.

## GT 3193



**Material:** Copper/brass

**Site type:** Terrestrial

**Description:** Buckle, double frame, semicircular, undecorated, crudely finished, ? forged. Remains of iron pin on central bar. Copper alloy.



**Dimensions:** : Lg: 40mm, Wd: 36mm.

## GT 3203



**Material:** Copper/brass

**Site type:** Marine

**Description:** Belt rider, brass,  
ornate.



**Dimensions:** Lg: 47.40mm, Wd:  
10.32mm, Ht: 13.65mm, Th:  
2.31mm.

## GT 3133



**Material:** Copper/brass

**Site type:** Unconfirmed

**Description:** Belt rider, brass,  
ornate.



**Dimensions:** Lg: 48.24mm, Wd:  
10.36mm, Ht: 14.24mm, Th:  
2.24mm.

# Buttons.

GT 3195



**Material:** Copper/brass

**Site type:** Terrestrial

**Description:** Button, flat w/ ring shank. Copper alloy.



**Dimensions:** DIA: 23.5 mm, Th: 1.5 mm, HO: 7.4 mm.

## GT 888



**Material:** Copper/brass

**Site type:** Marine

**Description:** Button, brass.

**Dimensions:** DIA: 10.50mm,  
button Th: 6.77mm, loop Lg:  
6.19mm, Wt: 1.8g.



## GT 3035

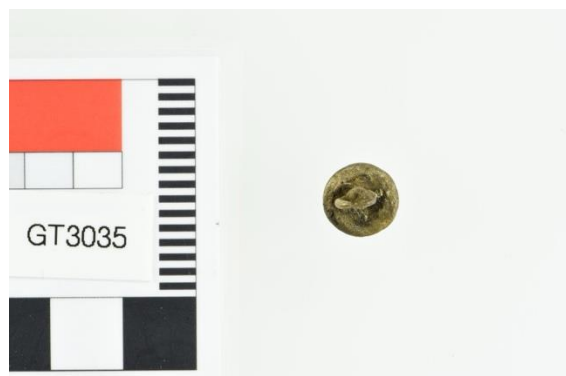


**Material:** Copper/brass

**Site type:**

**Description:** Button, brass, w/  
shank.

**Dimensions:** Button DIA:  
10.50mm, button Th: 6.77mm, loop  
Lg: 6.19mm, Wt: 1.8g.



# Hooks and eyelets.

GT 3116



**Material:** Copper/brass

**Site type:** Unconfirmed

**Description:** Hook, large, brass.

**Dimensions:** Lg: 41.48mm, Wd: 15.5mm.



## GT 3121B



**Material:** Copper/brass

**Site type:** Unconfirmed

**Description:** Hooks and eyes,  
(dress) brass.



**Dimensions:** Hook Lg: 14.12mm,  
Wd: 8.74mm,  
Eye Lg: 10.98mm, Wd: 10.29mm,  
DIA: 6.63mm.

## GT 3121C



**Material:** Copper/brass

**Site type:** Unconfirmed

**Description:** Hooks and eyes,  
(dress) brass.

**Dimensions:** Total Wt: 2.9g,  
Hook Av Lg: 13.56mm, Hook  
Av Wd: 9.47mm, Eye Av Lg:  
10.86mm, Eye Av Wd: 8.67mm.

## GT 3131 (hook), GT 3162 (eyelet)



**Material:** Copper/brass

**Site type:** Unconfirmed

**Description:** Eyelet - brass, ends are turned. Hook - large, brass, bandolier.

**Dimensions:** Eyelet DIA: 14.44mm,

Hook Lg: 47.32mm, Wd:

10.14mm.

# Hasps.

GT 3184



**Material:** Copper/brass

**Site type:** Unconfirmed

**Description:** Hasp from officer's shoulder belt. Decorative, cast copper alloy (bronze or brass).

**Dimensions:** Lg: 42 mm, Wd: 28.72mm, Th: 5.83mm.

GT 3153



**Material:** Copper/brass

**Site type:** Marine

**Description:** Heart-shaped hasp (2 pieces) + leather belt frags.



**Dimensions:** Lg: 23.82mm, Wd: 16.66mm, Th: 1.93mm, HO: 3.49mm

# *Zeewijk*

## 1727

# Buckles.

ZW 5672



**Material:** Non-ferrous

**Site type:** Terrestrial

**Description:** Buckle.



**Dimensions:** Lg: 45mm, Wd: 32.28mm, Th: 5.89mm.

## ZW 248R



**Material:** Copper/brass

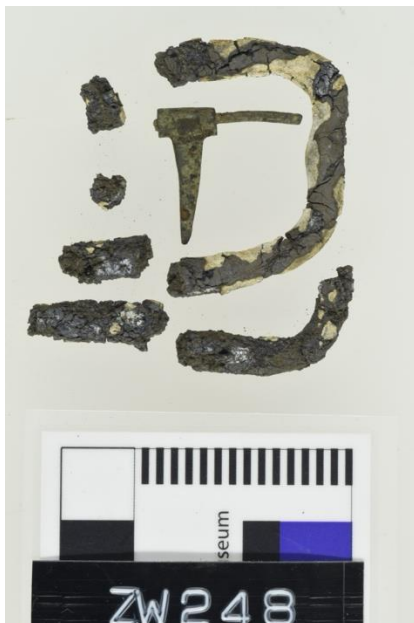
**Site type:** Terrestrial

**Description:** Buckle - brass, replica.

**Dimensions:** Lg: 31.82mm, Wd: 22.22mm, Th: 2.63mm.



## ZW 248A



**Material:** Copper/brass

**Site type:** Terrestrial

**Description:** Buckle frame brass, buckle pin, small piece of wood.



**Dimensions:** Buckle (largest fragment) - Lg: 34.20mm, Wd: 24.90mm, Th: 4.37mm

Pin - Lg: 19.78mm, Wd: 18.88mm.

## ZW 1017



**Material:** Copper/brass

**Site type:** Unconfirmed

**Description:** Buckle brass.

**Dimensions:** Lg: 43.06mm, Wd: 32.06mm, Th: 5.41mm.



## ZW 2626



**Material:** Copper/brass

**Site type:** Terrestrial

**Description:** Buckle chape brass.

**Dimensions:** Lg: 46.34mm, Wd: 32.66mm, Th: 4.64mm.





## ZW 196B



**Material:** Copper/brass

**Site type:** Terrestrial

**Description:** Buckle chape section:  
brass.

**Dimensions:** Lg: 75.04mm, Wd:  
44.14mm, Th: 4.99mm.



## ZW 1019



**Material:** Copper/brass

**Site type:** Unconfirmed

**Description:** Buckle frame brass.

**Dimensions:** Lg: 50.77mm, Wd:  
31.78mm, Th: 4.60mm.



## ZW 199AR



**Material:** Copper/brass

**Site type:** Terrestrial

**Description:** Buckle - copper + replica.



**Dimensions:** Lg: 45.5mm, Ig: 41.7 mm, Th: 5.38mm, Wt: 20.3g.

## ZW 4559



**Material:** Copper/brass

**Site type:** Terrestrial

**Description:** Buckle with chape, brass.



**Dimensions:** Lg: 48mm, Wd: 34mm, Th: 3.37mm, Wt: 20g.

## ZW 1170



**Material:** Copper/brass

**Site type:** Terrestrial

**Description:** Buckle, brass frame tinned, 2 parts.

**Dimensions:** Square - Lg: 47.08mm, Wd: 33.20mm, Th: 4.96mm.

Pronged - Lg: 38.99mm, 33.97mm, Th: 3.49mm.



## ZW 195



**Material:** Copper/brass

**Site type:** Terrestrial

**Description:** Buckle, brass.

**Dimensions:** Lg: 87.15mm, Wd: 46.52mm, Th: 5.02mm.



## ZW 1020



**Material:** Copper/brass

**Site type:** Terrestrial

**Description:** Buckle, shoe: brass.

Rectangular w/chape.

**Dimensions:** Lg: 44.64mm, Wd: 34.89mm, Th: 5.67mm.



## ZW 1018



**Material:** Copper/brass

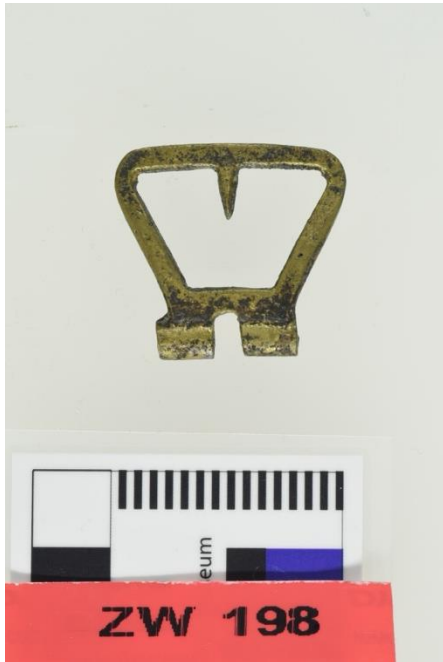
**Site type:** Unconfirmed

**Description:** Buckle, no chape, brass.

**Dimensions:** Lg: 50.90mm, Wd: 33.35mm, Th: 4.36mm.



## ZW 198



**Material:** Copper/brass

**Site type:** Terrestrial

**Description:** Buckle, brass.



**Dimensions:** Wd: 29.77mm, Wd: 18.43mm, Lg: 27.76mm, Th: 4.09mm.

## ZW 2371



**Material:** Copper/brass

**Site type:** Terrestrial

**Description:** Shoe buckle with Fe pivot, copper.



**Dimensions:** Shoe buckle - Lg: 37.17mm, Wd: 26.52mm, Th: 4.62mm.

Pivot - Lg: 19.23mm, Wd: 14.53mm.

ZW 5429



**Material:** Copper/brass

**Site type:** Terrestrial

**Description:** Buckle frame brass.

**Dimensions:** Lg: 42.80mm, Wd: 33.68mm, Th: 5.46mm.



# Buttons.

ZW 2396



**Material:** Copper/brass

**Site type:** Terrestrial

**Description:** Button fragment brass.



**Dimensions:** DIA: 25mm.



## ZW 5592



**Material:** Copper/brass

**Site type:** Terrestrial

**Description:** Button - brass, conical with back.



**Dimensions:** Lg: 13.75mm, DIA: 12.69mm, HO: 4.04mm.

## ZW 4485



**Material:** Copper/brass

**Site type:** Terrestrial

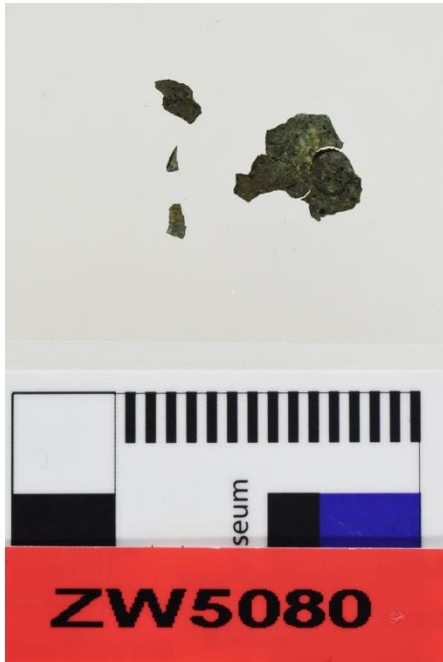
**Description:** Button brass.



**Dimensions:** DIA 15mm.



## ZW 5080



**Material:** Copper/brass

**Site type:** Terrestrial

**Description:** Button fragment, copper.



**Dimensions:** Largest fragment - Lg: 11mm, Wd: 11.67mm.

## ZW 1369



**Material:** Copper/brass

**Site type:** Terrestrial

**Description:** Button fragments, lead with brass loop.



**Dimensions:** Loop labelled 1369 - Ht: 9.92mm, Wd: 9.12mm, HO: 3.85mm.

## ZW 2151



**Material:** Copper/brass

**Site type:** Marine

**Description:** Button frags brass.

**Dimensions:** Large frag - DIA:

20.22mm, Ht: 6.00mm

Small frag - Lg: 19.19mm, Wd:

7.30mm.



## ZW 2321



**Material:** Animal

**Site type:** Terrestrial

**Description:** Button, bone.

**Dimensions:** DIA: 19.25mm, Ht:

11.32mm, HO: 2.94mm.



## ZW 2862



**Material:** Silver

**Site type:** Terrestrial

**Description:** Button, silver.



**Dimensions:** DIA: 10.12mm, Ht: 12.37mm, HO: 2.39mm.

## ZW 1361



**Material:** Animal

**Site type:** Terrestrial

**Description:** Button: bone, half only.



**Dimensions:** Largest fragment - Lg: 14.41, Wd: 7.70mm, Th: 7.04mm.

## ZW 4218



**Material:** Animal

**Site type:** Terrestrial

**Description:** Button, bone.

**Dimensions:** DIA: 15.99mm, Ht: 6.87mm, HO: 2.89mm.



## ZW 417



**Material:** Animal

**Site type:** Terrestrial

**Description:** Buttons, bone.

**Dimensions:** 1 DIA: 15.77mm, Ht: 8.91mm, HO: 2.69mm.

2 DIA: 17.91mm, Ht: 5.74mm, HO: 2.64mm.

3 DIA: 14.52mm, Ht: 9.67mm, HO: 2.08mm.

4 DIA: 17.94mm, Ht: 7.33mm, HO: 2.88mm.



## ZW 204G



**Material:** Animal

**Site type:** Terrestrial

**Description:** Buttons, bone. 1 whole plus 3 sections.

**Dimensions:** Whole button - DIA: 19.57mm, Ht: 7.52mm, HO: 2.77mm.



## ZW 5072



**Material:** Animal

**Site type:** Terrestrial

**Description:** Buttons, material?



**Dimensions:** Large button - DIA: 23.07mm, Ht: 7.72mm, DO: 3.74mm.

Small button - DIA: 14.95mm, Ht: 4.47mm.

## ZW 205AB



**Material:** Copper/brass

**Site type:** Terrestrial

**Description:** Buttons, brass. Small flat (A), Small round (B) (Nos. 7 & 8).



**Dimensions:** A - DIA: 13.9 mm, Ht: 12.12mm, HO: 4.40mm, Wt: 1.4g.

B - DIA: 17mm, Ht: 12.79mm, HO: 3.74mm, Wt: 3.9g.

## ZW 205E



**Material:** Copper/brass

**Site type:** Terrestrial

**Description:** Button, large round: brass. Slightly domed front and back. No decoration. Two 'air holes' on back, either side of loop shank. Diam 28 mm. (No. 11). [Original allocated to WA.]



**Dimensions:** DIA: 28 mm, Ht: 17.28mm, HO: 5.20mm, Wt: 6.9g



## ZW 205F



**Material:** Copper/brass

**Site type:** Terrestrial

**Description:** Large round plain button: brass.

Flattish front and sunken back with flat or 'key' shank. Diam 26 mm. (No. 12) [Original allocated to WA Suffix 'F' correct.]



**Dimensions:** DIA: 26 mm, Ht:

11.14mm, HO: 4.64mm, Wt: 6.6g.

## ZW 205X12



**Material:** Copper/brass

**Site type:** Terrestrial

**Description:** Button, large, ornamental, design includes perforations 36 mm. (No. 6)

**Dimensions:** DIA: 35.06mm, Th: 8.48mm.



## ZW 205X13



**Material:** Copper/brass

**Site type:** Terrestrial

**Description:** Buttons brass. Buttons numbered 1-23 (left to right, top to bottom) in reference to group photo ZW00205-GROUP-003. Dimensions recorded for each button using this numbering system.

**Dimensions:** 1 (DIA: 35.06mm, Th: 8.48mm), 2 (DIA: 27.98mm, Ht: 12.86mm, HO: 4.82mm), 3 (DIA: 27.14mm, Th: 6.52mm), 4 (DIA: 24.85mm, Ht: 13.42mm, HO: 3.84mm), 5 (DIA: 27.12mm, Ht: 16.23mm, HO: 4.44mm), 6 (DIA: 19.41mm, Th: 3.14mm), 7 (DIA: 18.94mm, Th: 3.37mm), 8 (Avg. frag. Lg: 13mm), 9 (DIA: 19.18mm, Th: 2.33mm), 10 (DIA: 19.27mm, Ht: 11.28mm, HO: 4.70mm), 11 (DIA: 14.22mm, Ht: 15.15mm, HO: 3.58mm), 12 (DIA: 13.70mm, Ht: 13.25mm, HO: 3.96mm), 13 (DIA: 13.59, Ht: 13.44mm, HO: 3.65mm), 14 (DIA: 14.17mm, Ht: 7.95mm, HO: 3.45mm), 15 (DIA: 14.11mm, Ht: 7.11mm, HO: 3.37mm), 16 (DIA: 17.50mm, Ht: 12.30mm, HO: 4.42mm), 17 (DIA: 12.58mm, Ht: 7.29mm), 18 (DIA: 12.80mm, Ht: 7.19mm, HO: 4.23mm), 19 (DIA: 12.90mm, Ht: 7.05mm, HO: 4.14mm), 20 (DIA: 12.81, Ht: 7.06mm, HO: 4.23mm), 21 (DIA: 13.10mm, Ht: 7.51mm), 22 (DIA: 15.21mm, Ht: 9.06mm, HO: 3.82mm), 23 (DIA: 15.97mm, Th: 5.22mm).



# Fasteners.

ZW 230C



**Material:** Copper/brass

**Site type:** Terrestrial

**Description:** Fitting; ornamental  
brass. Heraldic emblem.



**Dimensions:** Lg: 35.52mm, Wd:  
23mm, Th: 3.79mm.

*Zuytdorp*  
1712

# Buckles.

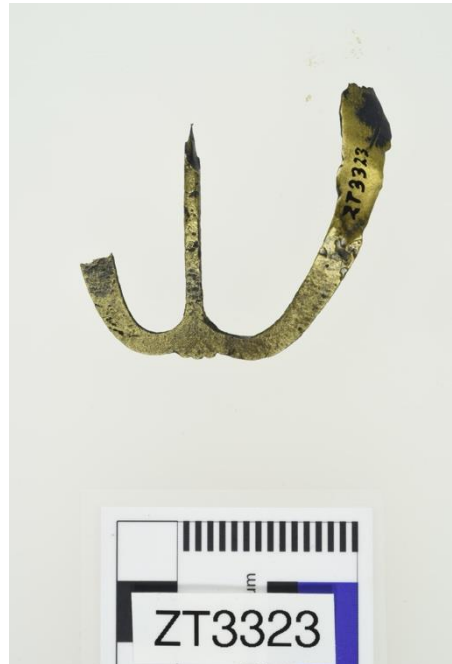
ZT 3323



**Material:** Copper/brass

**Site type:** Marine

**Description:** Buckle fragment,  
baldric. Copper alloy.



**Dimensions:** Lg: 45.47mm, Wd:  
43.36mm, Th: 3.07mm.

## ZT 4245



**Material:** Copper/brass

**Site type:** Marine

**Description:** Buckle fragment, copper.



**Dimensions:** Wd 1: 28.86mm, Wd 2: 24.68mm, Lg: 23.54mm, Th: 1.75mm.

## ZT 3968A



**Material:** Copper/brass

**Site type:** Unconfirmed

**Description:** Buckle frame from shoe, brass.



**Dimensions:** Lg: 39.20mm, Wd: 26.34mm, Th: 4.26mm

## ZT 4132



**Material:** Copper/brass

**Site type:** Marine

**Description:** Buckle w/chape: brass.

**Dimensions:** Lg: 40.95mm, Wd: 32.71mm, min. Wd: 31.02mm, total Wt: 19.9g.

## ZT 4320



**Material:** Copper/brass

**Site type:** Marine

**Description:** Buckle chape, brass. Oval with single-prong. cf Gawronski et al., *Hollandia Compendium*, 1992: 332, H1338.



**Dimensions:** Lg: 28mm, Th: 2mm, Th: 3mm, DIA: 30mm.

## ZT 4321



**Material:** Copper/brass

**Site type:** Marine

**Description:** Buckle frame, brass. Rectangular with molded scallop decoration on both sides. Slightly convex.



**Dimensions:** Lg: 42mm, Wd: 26.5mm, Th: 4.5mm.

## ZT 4323



**Material:** Copper/brass

**Site type:** Marine

**Description:** Buckle, broken into 3 pieces. Rectangular frame with rounded ends and slightly concave sides. No chape.



**Dimensions:** Lg: 45mm, Wd: 30mm, Th: 2.9mm.

# Buttons.

ZT 4102



**Material:** Animal

**Site type:** Unconfirmed

**Description:** Button, bone.

**Dimensions:** DIA: 18mm, Th:  
8.5mm, Wt: 2g.

## ZT 4115



**Material:** Animal

**Site type:** Unconfirmed

**Description:** Button, bone with shank.



**Dimensions:** DIA: 18.00 mm, Th: 2.60mm, HO: 3.49mm.

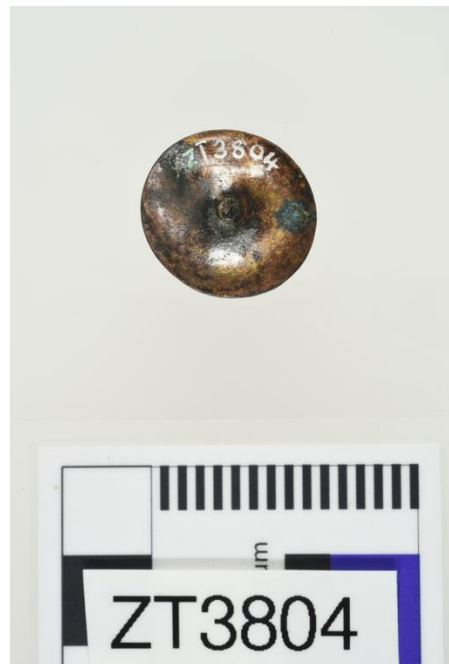
## ZT 3804



**Material:** Copper/brass

**Site type:** Terrestrial

**Description:** Button, floral shank missing. Brass.



**Dimensions:** DIA: 19.06mm, Th: 9.24mm



## ZT 3270



**Material:** Copper/brass

**Site type:** Unconfirmed

**Description:** Button: round w/ shank.

Two small holes on reverse. (In 2 pieces??)



**Dimensions:** DIA: 11.94mm, Ht: 12.47mm, HO: 3.31mm.

## ZT 3106



**Material:** Silver

**Site type:** Unconfirmed

**Description:** Button: w/ piece at back. Silver.



**Dimensions:** Front - DIA: 21.03mm, Th: 15.51mm  
Back - DIA: 21.92mm, Th: 1.41mm.

## ZT 4223



**Material:** Animal

**Site type:** Marine

**Description:** Button:  
wood/bone/ivory- concretion.



**Dimensions:** DIA: 23.30mm, Ht:  
6.85mm, HO: 3.08mm, Wt: 2g.

## ZT 4116



**Material:** Animal

**Site type:** Marine

**Description:** Button/washer with  
single hole: bone.



**Dimensions:** Wt: 1g, DIA:  
11.78mm, Ht: 8.86mm, HO:  
3.34mm.

## ZT 4002



**Material:** Animal

**Site type:** Marine

**Description:** Buttons, bone.



**Dimensions:** Large - DIA:

17.89mm, Ht: 7.76mm, HO:  
2.99mm.

Small - DIA: 15.94mm, Ht:  
7.92mm, HO: 2.99mm.

# Clasps.

ZT 4298A



**Material:** Copper/brass

**Site type:** Marine (unconfirmed)

**Description:** Clasp, copper/zinc alloy.



**Dimensions:** Lg: 50.09mm, Wd: 39mm, Th: 6.92mm.

# APPENDIX \*

\*Accurate at time of publication (4/2024)

Registration Number	Material Code	Site Type	Museum Location	Artefact Location Secondary	Artefact Tray No.
BAT3002	32	Unconfirmed	MA	MAC-064	02
BAT3043	32	Unconfirmed	MMU	-	-
BAT3198	32	Unconfirmed	MMU	-	-
BAT3240	32	Unconfirmed	MA	Numismatics Room	04
BAT3321	32	Unconfirmed	MMU	-	-
BAT3346	32	Unconfirmed	MA	MAC-064	06
BAT340	32	Terrestrial	MMV	4	-
BAT3463	32	Unconfirmed	MA	MAC-064	09
BAT3467	32	Unconfirmed	MMU	TD2	-
BAT3476A	32	Unconfirmed	MA	MAC-064	03
BAT3476B	32	Unconfirmed	MA	MAC-064	03
BAT3476C	32	Unconfirmed	MA	MAC-064	03
BAT3498	32	Unconfirmed	MA	MAC-064	04
BAT3504B	32	Marine	MMU	TD2	05
BAT3511	32	Marine	MA	MAC-056	05
BAT3511A	32	Marine	MA	MAC-064	04
BAT3566	32	Unconfirmed	MA	MAC-064	07
BAT3587	32	Unconfirmed	MA	MAC-064	07
BAT3589B	32	Unconfirmed	MA	MAC-056	06
BAT3589C	32	Unconfirmed	MA	MAC-064	02
BAT3593A	32	Unconfirmed	MA	MAC-064	02
BAT3594	35	Unconfirmed	MMU	55	-
BAT3596	32	Unconfirmed	MMU	TD2	-
BAT361	32	Unconfirmed	MA	MAC-063	02
BAT3619	32	Unconfirmed	MA	MAC-064	02
BAT3620	32	Unconfirmed	MMU	TD2	-
BAT3623	32	Unconfirmed	MA	MAC-064	02
BAT3624	32	Unconfirmed	MMV	4	-
BAT3629B	32	Unconfirmed	MA	MAC-056	06

Registration Number	Material Code	Site Type	Museum Location	Artefact Location Secondary	Artefact Tray No.
BAT3629C	32	Unconfirmed	MMU	TD2	
BAT3633	32	Unconfirmed	MA	MAC-064	02
BAT3651	32	Unconfirmed	MA	MAC-064	02
BAT3702	32	Unconfirmed	MA	MAC-064	02
BAT3703	32	Unconfirmed	MMU		
BAT3711	32	Unconfirmed	MMU		
BAT3747	32	Unconfirmed	MMU	TD2	
BAT3761	32	Unconfirmed	MMU	TD2	
BAT3772	32	Unconfirmed	MA	MAC-064	07
BAT3790	32	Unconfirmed	MA	MAC-064	07
BAT3791	32	Unconfirmed	MA	MAC-064	02
BAT3793	32	Unconfirmed	MMV		
BAT3845	32	Unconfirmed	MA	MAC-064	09
BAT3847	32	Unconfirmed	MMU		
BAT3848	32	Unconfirmed	MA	MAC-064	09
BAT3902ABC	46	Unconfirmed	MA	MAC-069	14
BAT3922	32	Terrestrial	MA	MAC-060	on top of - Nally Tub 36
BAT3956	32	Terrestrial	MA	MAC-63	01
BAT4032	67	Unconfirmed	MA	MAC-068	11
BAT4219	44	Unconfirmed	MA	MAC-069	05
BAT4501	44	Unconfirmed	MA	MAC-069	05
BAT4583AB	32	Unconfirmed	MA	MAC-058	01
BAT495	32	Unconfirmed	MA	MAC-064	03
BAT496A	32	Unconfirmed	MMU	TD2	
BCI45	32	Terrestrial	MA	MAC-064	09
BCI68	32	Terrestrial	MA	MAC-064	09
BILS1019	8	Terrestrial	MA	MAC-071	06
BILS1020	8	Terrestrial	MA	MAC-071	06
BILS1021	8	Terrestrial	MA	MAC-071	06

Registration Number	Material Code	Site Type	Museum Location	Artefact Location Secondary	Artefact Tray No.
BILS1023	8	Terrestrial	MA	MAC-071	06
BILS1031	0	Terrestrial	MA	MAC-071	06
BILS1032	0	Terrestrial	MA	MAC-071	06
BILS1033	0	Terrestrial	MA	MAC-071	06
BILS1037	0	Terrestrial	MA	MAC-071	06
BILS1038	0	Terrestrial	MA	MAC-071	06
BILS1039	0	Terrestrial	MA	MAC-071	06
BILS1045	0	Terrestrial	MA	MAC-071	06
BILS1046	0	Terrestrial	MA	MAC-071	06
BILS230	32	Terrestrial	MA	MAC-037	On top of
BILS245	32	Terrestrial	MA	MAC-060	Nally Tub 38 - on top of
BILS346	32	Terrestrial	MA	MAC-060	Nally Tub 38 - on top of
BILS382	32	Terrestrial	MA	MAC-060	Nally Tub 38 - on top of
BILS383	32	Terrestrial	MA	MAC-060	Nally Tub 38 - on top of
BILS384	32	Terrestrial	MA	MAC-037	On top of
BILS385	32	Terrestrial	MA	MAC-037	On top of
BILS386	32	Terrestrial	MA	MAC-037	On top of
BILS387	32	Terrestrial	MA	MAC-037	On top of
BILS388AB	32	Terrestrial	MA	MAC-037	On top of
BILS389	32	Terrestrial	MA	MAC-037	On top of
BILS43	-	Terrestrial	MA	MAC-060	Nally Tub 38 - on top of
BILS547	32	Terrestrial	MA	MAC-037	On top of
BILS548	32	Terrestrial	MA	MAC-037	On top of
BILS553	32	Terrestrial	MA	MAC-037	On top of
BILS554	32	Terrestrial	MA	MAC-037	On top of
BILS5677A	3	Terrestrial	MA	MAC-071	On top of MAC-071/Nally Tub 11
BILS5784	8	Terrestrial	MA	MAC-071	On top of; Nally Tub 11
BILS5820	32	Terrestrial	MA	MAC-071	On top of; Nally Tub 11
BILS5831	44	Terrestrial	MA	MAC-038	on top of; Nally Tub 9
BILS5836	32	Terrestrial	MA	MAC-071	On top of; Nally Tub 11

Registration Number	Material Code	Site Type	Museum Location	Artefact Location Secondary	Artefact Tray No.
BILS588	32	Terrestrial	MA	MAC-037	On top of
BILS6063	3	Terrestrial	MA	MAC-071	On top of; Nally Tub 29
BILS6232	32	Terrestrial	MA	MAC-071	On top of; Nally Tub 29
BILS6234	32	Terrestrial	MA	MAC-071	On top of; Nally Tub 29
BILS6507	4	Terrestrial	MA	MAC-070	On top of; Nally Tub 33
BILS665	32	Terrestrial	MA	MAC-037	On top of
BILS666	-	Terrestrial	MA	MAC-037	On top of
BILS728	32	Terrestrial	MA	MAC-037	On top of
GT1346	32	Unconfirmed	MA	MAC-076	07
GT1347	32	Unconfirmed	MA	MAC-076	07
GT1348	32	Unconfirmed	MA	MAC-058	01
GT1349	32	Unconfirmed	MA	MAC-056	01
GT1351	32	Unconfirmed	MA	MAC-058	02
GT3035	32	Unconfirmed	MA	MAC-058	15
GT3042	32	Unconfirmed	MA	MAC-075	03
GT3084	32	Unconfirmed	MA	MAC-058	02
GT3102	32	Unconfirmed	MA	MAC-076	07
GT3103	32	Unconfirmed	MA	MAC-076	07
GT3104	32	Unconfirmed	MA	MAC-076	07
GT3105	32	Unconfirmed	MA	MAC-058	02
GT3106	32	Unconfirmed	MA	MAC-058	02
GT3107	32	Unconfirmed	MA	Numismatics	03
GT3108	32	Unconfirmed	MA	MAC-058	02
GT3116	32	Unconfirmed	MMU	30	-
GT3121B	32	Unconfirmed	MA	MAC-058	02
GT3121c	32	Unconfirmed	MA	MAC-058	15
GT3130	32	Unconfirmed	MA	MAC-058	02
GT3131	32	Unconfirmed	MMU	30	-
GT3133	32	Unconfirmed	MA	MAC-058	15
GT3136	32	Unconfirmed	MA	MAC-058	02



Registration Number	Material Code	Site Type	Museum Location	Artefact Location Secondary	Artefact Tray No.
GT3138A	32	Unconfirmed	MA	MAC-076	07
GT3147	32	Unconfirmed	MA	MAC-076 (2 pcs, 1 selected for Wanneroo)	04
GT3153	32	Marine	MA	MAC-058 (hasp)	02 (hasp)
GT3162	32	Unconfirmed	MMU	30	-
GT3184	32	Unconfirmed	MA	Numismatics Room	03
GT3193	32	Terrestrial	MA	MAC-075	02
GT3195	32	Terrestrial	MA	MAC-075	02
GT3197	34	Terrestrial	MA	MAC-075	02
GT3203	32	Marine	MA	MAC-075	03
GT848	32	Unconfirmed	MMU	30	-
GT887	32	Unconfirmed	MA	MAC-048	02
GT888	32	Unconfirmed	MA	MAC-058	15
LI1000B	32	Terrestrial	MA	MAC-061	08
LI1001	32	Terrestrial	MA	MAC-061	08
LI1002	32	Terrestrial	MA	MAC-061	08
ZT3106	35	Unconfirmed	MMU	38	-
ZT3270	32	Unconfirmed	MMU	39B	-
ZT3323	32	Wreck site	MMU	39B	-
ZT3804	32	Terrestrial	MMU	39B	-
ZT3968A	32	Unconfirmed	MMU	39B	-
ZT4002	41	Marine	MA	MAC-091	18
ZT4102	41	Unconfirmed	MA	MAC-091	10
ZT4115	41	Unconfirmed	MA	MAC-091	18
ZT4116	41	Marine	MA	MAC-091	3
ZT4132	32	Marine	MA	Numismatics Room	04
ZT4223	41	Marine	MA	MAC-091	3
ZT4245	32	Marine	MA	MAC-091	08
ZT4298A	32	Marine (?)	MA	MAC-091	08
ZT4304	32	Marine (?)	MA	MAC-091	08
ZT4320	32	Marine	MA	MAC-052	05

Registration Number	Material Code	Site Type	Museum Location	Artefact Location Secondary	Artefact Tray No.
ZT4321	32	Marine	MA	MAC-052	05
ZT4323	32	Marine	MA	MAC-052	05
ZW1017	32	Marine	MMU	52	-
ZW1018	32	Marine	MMU	52	-
ZW1019	32	Marine	MMU	52	-
ZW1020	32	Terrestrial	MMU	52	-
ZW1170	32	Terrestrial	MMU	52	-
ZW1361	41	Terrestrial	MA	MAC-081	01
ZW1369	32	Terrestrial	MA	MAC-081	02
ZW195	32	Terrestrial	MMU	52	-
ZW196B	32	Terrestrial	MMU	52 [& GM]	-
ZW198	32	Terrestrial	MA	MAC-081	02
ZW199AR	32	Terrestrial	MA	MAC-081	02
ZW204G	41	Terrestrial	MMU	50	-
ZW205AB	32	Terrestrial	MA	MAC-081	02
ZW205E	32	Terrestrial	MA	MAC-081	02
ZW205F	32	Terrestrial	MA	MAC-081	02
ZW205X12	32	Terrestrial	MMU	52	-
ZW205X13	32	Terrestrial	MMU	52	-
ZW205x2	32	Terrestrial	MMU	52	-
ZW205X3	32	Terrestrial	MMU	52	-
ZW205X4	32	Terrestrial	MMU	52	-
ZW205X5	32	Terrestrial	MMU	52	-
ZW205X6	33	Terrestrial	MMU	52	-
ZW205XX1	32	Terrestrial	MMU	52	-
ZW205XX2	32	Terrestrial	MMU	52	-
ZW2151	32	Marine	MMU	52	-
ZW230C	32	Terrestrial	MA	MAC-081	02
ZW2321	41	Terrestrial	MMU	50	-
ZW2371	32	Terrestrial	MA	MAC-081	02

Registration Number	Material Code	Site Type	Museum Location	Artefact Location Secondary	Artefact Tray No.
ZW2396	32	Terrestrial	MMU	52	-
ZW248A	32	Terrestrial	MA	MAC-081	02
ZW248R	32	Terrestrial	MMU	Replica N/A MMU52	-
ZW2626	32	Terrestrial	MMU	52	-
ZW2862	51	Terrestrial	MMU	47	-
ZW417	41	Terrestrial	MMU	50	-
ZW4218	41	Terrestrial	MMU	50	-
ZW4485	32	Terrestrial	MMU	52	-
ZW4559	32	Terrestrial	MA	MAC-081	02
ZW502	32	Unconfirmed	MMU	53	-
ZW5072	41	Terrestrial	MA	MAC-081	01
ZW5080	32	Terrestrial	MA	MAC-081	02
ZW5429	32	Terrestrial	MMU	52	-
ZW5592	32	Terrestrial	MA	MAC-081	02
ZW5672	3	Terrestrial	MA	MAC-081	02