

**Western Australian Museum - Education**

• Perth • Maritime • Shipwreck Galleries • Albany • Geraldton • Kalgoorlie-Boulder •

## Perth



Perth Cultural Centre, James Street, Perth  
Phone: (08) 9427 2792  
Fax: (08) 9427 2883  
Email: education@museum.wa.gov.au



Western Australian Museum  
**Perth**

## Maritime



Victoria Quay, Fremantle  
Phone: (08) 9431 8455  
Fax: (08) 9431 8490  
Email: freoedu@museum.wa.gov.au



Western Australian Museum  
**Maritime**

## Shipwreck Galleries



Cliff Street, Fremantle  
Phone: (08) 9431 8455  
Fax: (08) 9431 8490  
Email: freoedu@museum.wa.gov.au



Western Australian Museum  
**Shipwreck Galleries**

## Geraldton



Museum Place, Batavia Coast Marina, Geraldton  
Phone: (08) 9921 5080  
Fax: (08) 9921 5158  
Email: geraldton.museum@museum.wa.gov.au



Western Australian Museum  
**Geraldton**

## Albany



Residency Road, Albany  
Phone: (08) 9841 4844  
Fax: (08) 9841 4027  
Email: albany@museum.wa.gov.au



Western Australian Museum  
**Albany**

## Kalgoorlie-Boulder



17 Hannan Street, Kalgoorlie  
Phone: (08) 9021 8533  
Fax: (08) 9091 2791  
Email: eomog@museum.wa.gov.au



Western Australian Museum  
**Kalgoorlie-Boulder**

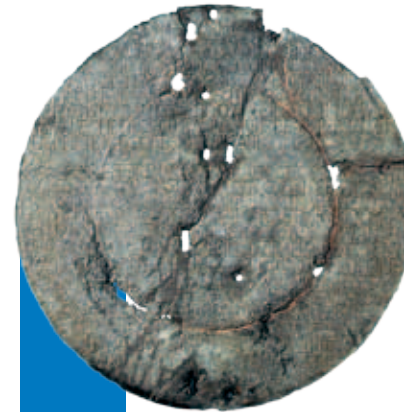
The *Western Australian Museum* is one of the oldest scientific institutions in the state, and for more than 100 years has been at the forefront of enhancing the appreciation and understanding of our unique natural environments and cultural heritage.

There are more than 4.4 million items held in the Museum's collections. Last year Museum staff described 2 new animal genera, 25 new animal species, 27 new meteorites and 2 new fossil species!



Perth

Each year the Museum makes a major contribution to the collection, conservation and research of the state's natural and social history, its maritime heritage and the cultural heritage of Indigenous communities in Western Australia.



Shipwreck Galleries

Maritime



Geraldton



Albany

Kalgoorlie-Boulder



Choose your destination...

The *Western Australian Museum* services metropolitan and regional areas with sites located in Perth, Fremantle, Albany, Geraldton and Kalgoorlie-Boulder.

## Ignite your students' curiosity and take learning beyond the classroom...

The *Western Australian Museum* provides quality excursion experiences which connect students and teachers with our collections and research.

We have a range of facilitated programs for all developmental levels, led by our dedicated team of Education Officers. A range of self-guided experiences are available for those classes that wish to explore the Museums on their own.



## Book now!

Bookings are essential for all school visits (facilitated and self-guided) to the sites of the *Western Australian Museum*.

It is preferable that bookings are made a minimum of two weeks in advance. Please advise at the time of your booking if your group has any special needs or access requirements.



## Visit us online!

Be sure to visit our website for information including:

- site-specific programs
- student and teacher resource materials
- planning and booking your excursion
- Excursion Management Plans for each site
- Teacher Professional Learning opportunities
- special programs
- permanent and temporary exhibitions.



[www.museum.wa.gov.au/education](http://www.museum.wa.gov.au/education)

The United Nations has declared 2010 as the International Year of Biodiversity.

In response to International Year of Biodiversity the *Western Australian Museum* has created a series of programs to celebrate WA's unique biodiversity, reflect on the achievements of our staff to safeguard biodiversity, and focus on the urgency of our challenge for the future.

Join us, together with Professor Lyn Beazley, Chief Scientist and Patron of the Museum's International Year of Biodiversity program and Dr Harry Butler, Fellow of the Western Australian Museum, to put a spotlight on biodiversity.

### Biodiversity Education

A range of education programs which encourage understanding and appreciation of local biodiversity will be available during 2010.



Look for this icon on the Programs Overview pages for each site.



# Biodiversity is life.

## Biodiversity is our life.



The most remarkable places on Earth are also the most threatened.

[www.biodiversityhotspots.org](http://www.biodiversityhotspots.org)

For further information about the International Year of Biodiversity, including the Museum's programs, events and lectures across Western Australia, please visit



[www.museum.wa.gov.au/biodiversity](http://www.museum.wa.gov.au/biodiversity)



Visit the *Western Australian Museum* – *Perth* and discover the rich history of our buildings and collections.

The Museum is conveniently located in the *Perth Cultural Centre* and within walking distance to the Perth train station. Schools might like to consider combining their Museum excursion with a visit to the *Art Gallery of Western Australia* or the *State Library of Western Australia*.



Western Australian Museum – Perth  
Perth Cultural Centre, James Street, Perth

Open 9:30am - 5:00pm on school days  
(excluding Wednesdays)

## Museum Highlights

- Have a close encounter with ancient fossils in the awesome *Diamonds to Dinosaurs*.
- Step back in time and explore the Victorian-era *Mammal Gallery*, with specimens over 100 years old.
- Take a journey through our state's natural and social history in *Western Australia: Land and People*.
- Discover the diversity of Western Australia's Indigenous cultures in *Katta Djinoong* gallery.
- Explore the *Old Gaol*, completed in 1856, and examine the wonderful objects from the past.
- Visit the *Discovery Centre* and inspect an insect or two, as well our amazing collection of living creatures.



Our Education Officers will take students on a memorable learning adventure, bringing the exhibitions and objects of the *Western Australian Museum – Perth* to life with experiences that will inform, entertain and inspire.

Where else can your students unearth a buried T-Rex fossil, wrap an Egyptian mummy and conduct a burial ritual, share stories from local Indigenous cultures, examine amazing animal species or travel back in time to explore early settlement?



Our education experiences reach beyond the collections with lively presenters, engaging activities, fascinating facts and objects to examine.



## Excursion Options

### Facilitated Programs:

All facilitated programs are led by an Education Officer and must be booked in advance. Programs occur daily at 9:45am, 11:00am and 12:15pm and are approximately one hour in duration, depending on the age of the students.

We recommend that you also allow additional time to explore the galleries in the Museum. You may like to supplement your visit with self-guided resources.

### Self-guided Experiences:

Visit the Museum and explore the galleries in small groups at your own pace.

## Program Costs

### Facilitated Programs:

\$5.00 per student (including GST).

### Self-guided Experiences:

Entry by donation.



## Further Information

Please refer to our website for information and resources relating to school excursions.  
[www.museum.wa.gov.au/education](http://www.museum.wa.gov.au/education)

## Excursion Bookings

Western Australian Museum – Perth  
 Perth Cultural Centre, James Street, Perth

(08) 9427 2792

[education@museum.wa.gov.au](mailto:education@museum.wa.gov.au)

## K - 3 Early Childhood

### We Dig Dinosaurs

S

Become a palaeontologist for the day!

### Backyard Biodiversity



S

Take a look at the 'circle of life' in a natural ecosystem.

### Beautiful Butterflies (Years K-1)



S

Explore our gorgeous collection of butterflies and find out about their magical life cycle. (Available from Term 2)

### Traditional Tools and Teachings

S&E

Discover how basic needs were met by different traditional Aboriginal groups.

### In the Olden Days

S&E

Step back in time to discover what everyday life was like for children in the past.

### Museum Explorers

S S&E

A great orientation to the Museum for younger visitors.

## 4 - 7 Middle Childhood

### Magnificent Megafauna



S

Investigate the recovery of fossilised remains of an extinct marsupial predator.

### Threatened or Thriving



S S&E

Focus on local ecosystems and explore the threats to the biodiversity within them.

### Sticks, Stones and Animal Bones

S&E

Discover the innovative and sustainable ways of traditional Aboriginal groups.

### A Strange New Land

S&E

Explore the challenges faced by the Swan River Colony's new and traditional residents.

### Tomb Time

S&E

Explore Ancient Egyptian burial rituals and journey into the Afterlife.

### Museum Mysteries

S S&E

Take a fresh look at our amazing collections!

## 8 -10 Early Adolescence

### Self-guided Experiences

S S&E

Please visit our website for our range of self-guided topics and resources.

## 11 -12 Late Adolescence

### Self-guided Experiences

S S&E

Please visit our website for our range of self-guided topics and resources.



For more information on our programs visit us online:  
[www.museum.wa.gov.au/education](http://www.museum.wa.gov.au/education)





Visit the *Western Australian Museum – Maritime* and take a journey through our nautical history.

The Maritime Museum is located on Victoria Quay in Fremantle, in the heart of the historic working port. There are six themed galleries inside the Museum, showcasing iconic vessels such as *Australia II* and Jon Sanders' *Parry Endeavour*. Schools might like to consider combining their Museum excursion with a visit to the *Western Australian Museum – Shipwreck Galleries*, for a whole day's experience of Fremantle.



Western Australian Museum – Maritime  
Victoria Quay, Fremantle

Open 9:30am - 5:00pm on school days  
(excluding Wednesdays)

## Museum Highlights

- Discover the story of Fremantle Harbour in the *Fremantle and Swan River* gallery.
- Learn about how people muck about in the water in the *Tin Canoe to Australia II* gallery.
- Find out about our fishing heritage in the *Hooked on Fishing* gallery and see the beautiful pearling lugger *Trixen*.
- In the *Indian Ocean* gallery, imagine being inside a 15th century Middle Eastern market place.
- See the wall of cargoes, and hear the story of whaling in the *Cargoes* gallery.
- In the *Naval Defence Gallery*, learn about protecting Australia in times of war and peace, and see a replica WW1 submarine conning tower.
- Older students can be guided on board the Submarine HMAS *Ovens* to imagine life on board the silent world of submarines.



Come and journey through Western Australia's maritime history as you explore the many historic objects, boats and stories with our engaging Education Officers and Volunteer Guides.

Learn how boats float, imagine sailing around the world alone, and come aboard the 100 year old ferry *Valdura* inside the Museum! Marvel at the winged keel of *Australia II*, and see the awesome Submarine HMAS *Ovens*. View the passing parade of ships in busy Fremantle Harbour. In our interactive programs, make or draw your own boats, and learn about global warming and sustainable fishing techniques.



## Excursion Options

### Facilitated Programs:

All facilitated programs are led by our Education Officers or trained Volunteer Guides and must be booked at least two weeks in advance. Program duration varies between one and two hours, depending on the program and the age of students.

### Self-guided Experiences:

Visit the museum and explore the galleries in small groups at your own pace. Self-guided visits must be booked in advance.

## Program Costs

### Facilitated Programs:

\$4.00 - \$7.00 per student (including GST)

### Self-guided Experiences:

\$3.00 per student (including GST)



## Further Information:

Please refer to our website for information and resources relating to school excursions.  
[www.museum.wa.gov.au/education](http://www.museum.wa.gov.au/education)

## Excursion Bookings:

Western Australian Museum – Maritime  
Victoria Quay, Fremantle

(08) 9431 8455

[freoedu@museum.wa.gov.au](mailto:freoedu@museum.wa.gov.au)

## K - 3 Early Childhood

### About Boats

E S S&E T&E

Learn how boats float, experiment with making and floating a plasticine boat to carry cargo, and learn about all the different kinds of boats in our Museum.

### Whale Tales



E S&E T&E

Journey around the Museum and help the toy baby whale find its mother. Listen to stories about boats and the sea, maritime adventures and challenges.



## 4 - 7 Middle Childhood

### General Tour

E S S&E T&E

Explore all the gallery themes on a guided tour of the Museum. Step on board the ferry *Valdura*, or try your hand at our interactives.

### Maritime Transport

E S S&E T&E

Learn how boats float and sail, how boat design and construction has changed over time, and how boats can be used. Draw different boats in the galleries or write a recount or short story.

### Strangers on the Shore

E S S&E T&E

Hear how Aboriginal people utilised the coast and rivers sustainably, and consider the impact of European settlement.

### Sustainable Seas



E S S&E T&E

Participate in hands-on activities, listen to stories about sustainable fishing practices and consider ways to promote the sustainable use of the sea.

### Life Beneath the Waves

E S S&E T&E

Tour the Submarine HMAS *Ovens*, imagine life on board the silent world of submarines, and learn about Fremantle as a secret submarine base during World War II.

## 8 - 10 Early Adolescence

### General Tour

E S S&E T&E

Explore all the gallery themes on a guided tour of the Museum. Step on board the ferry *Valdura*, or try your hand at our interactives.

\* Guided tours can also focus on specific themes within the galleries (subject to availability).

### Maritime Transport

E S S&E T&E

Learn how boats float and sail, how boat design and construction has changed over time, and how boats can be used.

### Strangers on the Shore

E S S&E T&E

Hear how Aboriginal people utilised the coast and rivers sustainably and consider the impact of European settlement.

### Sustainable Seas



E S S&E T&E

Participate in hands-on activities, listen to stories about sustainable fishing practices and consider ways to promote the sustainable use of the sea.

### Life Beneath the Waves

E S S&E T&E

Tour the Submarine HMAS *Ovens*, imagine life on board the silent world of submarines, and learn about Fremantle as a secret submarine base during World War II.

## 11 - 12 Late Adolescence

### Guided Tours

Guided tours can focus on specific themes within the galleries, and can be tailored for Marine & Maritime Technology, History and Tourism students (subject to availability).



For more information on our programs visit us online: [www.museum.wa.gov.au/education](http://www.museum.wa.gov.au/education)



Built by convicts in the 1850's, the *Western Australian Museum – Shipwreck Galleries* is one of the most important maritime archaeology museums in the southern hemisphere.

The Museum is located within Fremantle's historic West End precinct. It is home to hundreds of shipwreck relics from Western Australia's maritime past, from the 17th century to the early part of last century. Schools might like to consider combining their Museum excursion with a visit to the *Western Australian Museum – Maritime*, for a whole day's experience of Fremantle.



Western Australian Museum  
Shipwreck Galleries  
Cliff Street, Fremantle

Open 9:30am - 5:00pm on school days  
(excluding Wednesdays)

## Museum Highlights

- Learn about the first European contact with the Australian coast and see artefacts left behind by early explorers, including the original pewter plate left by Willem de Vlamingh in 1697.
- Hear stories about the spice trade and see relics from famous shipwrecks along the Western Australian coast including the *Zuytdorp*, *Zeewijk* and *Vergulde Draeck* in the *Dutch Wrecks* gallery.
- See first hand the spectacular reconstructed hull timbers of the Dutch ship *Batavia* – infamous for the mutiny and murder of its passengers and crew in 1629.



Uncover tales of exploration, disaster, mutiny and survival as your class explores Australia's earliest shipwrecks with our experienced Education Officers and Volunteer Guides.

Trace the extraordinary voyages of the spice traders and the race to discover the Great South Land. In our interactive programs, learn how to load and fire a replica cannon, and imagine life aboard a 17th century sailing ship. Learn how boats float, and build and race your own model boat. Imagine you are a shipwreck detective, and be the first to identify a mystery shipwreck.



An excursion to our Museum enriches your classroom program.

## Excursion Options

### Facilitated Programs:

All facilitated programs are led by our Education Officers or trained Volunteer Guides and must be booked at least two weeks in advance. Program duration varies between one and two hours, depending on the program and the age of students.

### Self-guided Experiences:

Visit the museum and explore the galleries in small groups at your own pace. Self-guided visits must be booked in advance.

## Program Costs

### Facilitated Programs:

\$4.00 - \$7.00 per student (including GST)

### Self-guided Experiences:

Entry by donation



## Further Information:

Please refer to our website for information and resources relating to school excursions.  
[www.museum.wa.gov.au/education](http://www.museum.wa.gov.au/education)

## Excursion Bookings:

Western Australian Museum –  
Shipwreck Galleries  
Cliff Street, Fremantle

(08) 9431 8455  
[freoedu@museum.wa.gov.au](mailto:freoedu@museum.wa.gov.au)

## K - 3 Early Childhood

### Pirate's Apprentice

**E H&PE S&E T&E**

Hear stories of shipboard life, shipwrecks, and mutiny. Handle real cannon balls, see real treasure and help to load and 'fire' a replica cannon.

### Puss in Boats

**E H&PE S&E T&E**

Take turns to carry the ship's cat whilst learning about the spice traders and life on board a 400 year old sailing ship. Hunt for rats, handle silver coins, smell spices and see a cat with nine tails.



## 4 - 7 Middle Childhood

### General Tour

**E S S&E**

Hear stories of the *Batavia* and other Dutch shipwrecks, and tales of mutiny and survival.

### Exploration and Discovery

**E S&E T&E**

Hear stories about the spice trade, and the early European explorers who charted the coast of the South Land.

### Shipwreck Detectives

**E S S&E T&E**

Examine real shipwreck artefacts and unlock the mysteries of the deep, just like a real marine archaeologist.

### Don't Rock the Boat

**S T&E**

Learn how boats stay afloat, build and race model sailing ships in our test tank, and discover ways to make boats sail faster.

### Real Histories of Pirates

**E H&PE S S&E T&E**

Debunk the Hollywood myths and learn about the real pirate code, pirate excesses and modern-day pirates.

### Walking Tours

**E H&PE S&E**

#### European Settlement and the Maritime Precinct

Imagine the conditions faced by early European settlers.

#### From Terra Australis to the Land of the Long Weekend

Learn how our coastline, so feared by early explorers, is central to the way we now play, compete and seek adventure.

## 8 -10 Early Adolescence

### General Tour

**E S S&E**

Follow the journeys of some of the early European explorers, who charted the coast of the Great South Land.

\* Guided tours can also focus on specific themes within the galleries (subject to availability).

### Batavia Fiction

**E S&E**

After reading *Strange Objects* by Gary Crew, or *The Devil's Own* by Deborah Lisson, learn about the real *Batavia* story, and discover the artefacts these novels are based on.

### Maritime Archaeology

**S S&E**

Handle, describe and record features of real artefacts, and tour the *Shipwreck Galleries* to discover the stories and artefacts from the famous shipwrecks on our WA coast.

### Shipwreck Detectives

**E S S&E T&E**

Examine real shipwreck artefacts and unlock the mysteries of the deep, just like a real marine archaeologist.

### Walking Tours

**E H&PE S&E**

#### European Settlement and the Maritime Precinct

Imagine the conditions faced by early European settlers.

#### From Terra Australis to the Land of the Long Weekend

Learn how our coastline, so feared by early explorers, is central to the way we now play, compete and seek adventure.

## 11 -12 Late Adolescence

### Guided Tours

Tours can focus on specific themes within the galleries, and can be tailored to the Maritime Heritage and Archaeology component of the Marine and Maritime Technology Course of Study.

### Maritime Archaeology

**S S&E**

Handle, describe and record features of real artefacts, and tour the *Shipwreck Galleries* to discover the stories and artefacts from the famous shipwrecks on our WA coast.



For more information on our programs visit us online:  
[www.museum.wa.gov.au/education](http://www.museum.wa.gov.au/education)



Discover the riches of the Mid West and Coral Coast with a visit to the *Western Australian Museum – Geraldton*.

Located on the beautiful Batavia Coast Marina, the Museum's many stories extend from the desert to the Abrolhos Islands.

From the moment you are greeted by the imposing Bristol Tourer bi-plane, each gallery offers a new surprise around every bend.



Western Australian Museum – Geraldton  
Museum Place, Batavia Coast Marina, Geraldton

Open 9:30am - 4:30pm on school days  
(excluding Wednesdays)

## Museum Highlights

- Take a journey through the *Mid West* gallery and discover the natural and social history of the region.
- Be intrigued by the life of the Indigenous people.
- Be amazed by the unique native flora and fauna and the biodiversity that exists in the region.
- Discover the influence of European settlement and the development of mining, farming and fishing.
- Visit the *Shipwrecks* gallery where four shipwrecks reveal their treasures from the deep.
- View the *Pride of the Fleet* exhibition and experience the poignant and personal stories of HMAS *Sydney II*.



Join our Education Officer for fascinating stories of shipwrecks and mutineers, cameleers and stockmen, miners and the Indigenous people of the region that will keep students captivated throughout their visit to the *Western Australian Museum – Geraldton*.

Our Education Officer is available three days a week to guide students on a journey of discovery. Writing with pen and ink, fishing for dinner, searching for gold and sending Morse Code signals are just some of the experiences enjoyed by visiting students. Natural history will inspire young minds and the animals on display will leave them in awe.

### 2010 Clem Burns Heritage Award

In its 21st year, the Clem Burns Heritage Award is an annual competition conducted by the *Western Australian Museum – Geraldton*.

Open to all primary students in the Mid West, it promotes an understanding of the rich natural and cultural heritage of the region using technology and enterprise learning outcomes. Details will be sent to schools during Term 1.



### Excursion Options

#### Facilitated Programs:

All facilitated programs are led by the Education Officer and require booking in advance.

Most programs are of one hour duration, however it is suggested that additional time is allowed for students to further explore the Museum.

#### Self-guided Experiences:

Groups are welcome to visit the Museum and proceed at their own pace. Bookings are required for self-guided visits.

### Program Costs

#### Facilitated Programs:

\$4.00 per student (including GST)

#### Self-guided Experiences:

Entry by donation.

### Further Information:

Please refer to our website for information and resources relating to school excursions.  
[www.museum.wa.gov.au/education](http://www.museum.wa.gov.au/education)

### Excursion Bookings:

Western Australian Museum – Geraldton  
Museum Place, Batavia Coast Marina

(08) 9921 5080  
[geraldton.museum@museum.wa.gov.au](mailto:geraldton.museum@museum.wa.gov.au)



## K - 3 Early Childhood

### Salty Seas Biodiversity Program S S&E T&E

Take part in a fun-filled activity session to learn about the marine life of the Mid West.

### Pioneer Days H&PE S&E T&E

Enjoy a trip back to colonial times and discover what life was like one hundred years ago.

### Traditional Times Biodiversity Program H&PE S&E

Discover the bush food, medicine and sustainable ways of the Indigenous people of the Mid West.



## 4 - 7 Middle Childhood

### Pride of the Fleet S S&E T&E

An interactive session designed to complement student research on HMAS *Sydney II*.

### Shipwreck Stories H&PE S&E T&E

True stories to capture the imagination of students visiting the *Shipwrecks* gallery.

### Sustainable Seas Biodiversity Program S S&E T&E

Investigate the role individuals can play in the sustainable use of the sea.

### Camels, Coaches and Claims H&PE S&E T&E

Search for gold and learn about mateship, jubilation and despair on the Murchison Goldfields in the 1890's.

### Olden Days School Ways E M S&E

Experience school life from the past through a number of fun-filled activities.

### Magnificent Megafauna Biodiversity Program S

Investigate the recovery of fossilised remains of an extinct marsupial predator. (Available Semester 2)

## 8 -10 Early Adolescence

### Conflict in the Mid West S&E

A little known part of our history which describes the impact of the pastoral industry on the local Indigenous population.

### Pride of the Fleet S S&E T&E

An interactive session designed to complement student research on HMAS *Sydney II*.

### Shipwreck Stories H&PE S&E T&E

Explore the challenges faced by the mighty VOC in their pursuit of the spice trade in the Dutch East Indies.

### Fears and Fortunes H&PE S&E

The intriguing story of Western Australia's first mining boom which took place in the Mid West in the 1850's.

## 11 -12 Late Adolescence

### Self-guided Programs H&PE S S&E

Please visit our website for our range of self-guided topics and resources.



For more information on our programs visit us online:  
[www.museum.wa.gov.au/education](http://www.museum.wa.gov.au/education)



Come on a journey of discovery at the *Western Australian Museum – Albany* and share in the beauty and natural abundance of our *Kinjarling* – ‘place of rain’ and home of the Minang people.

Meet live local Long-necked Turtles, different species of frogs, King’s Skinks and varied bird life within our grounds, the site where Minang people fished and cooked and Western Australia was first proclaimed. Learn about our rich maritime history, threatened species, traditional Minang life and the amazing marine habitats of our southern seas.



Western Australian Museum – Albany  
Residency Road, Albany

Open 9:30am - 4:30pm on school days  
(excluding Wednesdays)

## Museum Highlights

- Investigate the history of the land, from local Minang creation stories to scientific theories of geological formation.
- Discover the rugged beauty of the Albany region, explore the vibrant biodiversity of its flora and fauna and be immersed in its rich social history.
- Visit our Discovery Centre and see live turtles, insects and unusual marine life or go fossil hunting.
- Explore the bush tucker garden and learn how abundant bush food is or sit in the frog garden or our new lizard garden to meet local wildlife.



The Education Team at the *Western Australian Museum – Albany* have developed a range of unique and engaging programs for primary and secondary classes.

Explore our exhibitions and artefacts with our Education Officers and Minang elders. Discover bush foods and learn about animal and marine habitats. Experience the reality of life in days past as you become a convict or meet Miss Crabapple.



Our engaging and interactive programs provide links between the Museum's collections, your classroom program and the curriculum.



## Excursion Options

### Facilitated Programs:

Our facilitated education opportunities are led by our Education Officers and Indigenous Presenters. Session times can be negotiated at the time of booking. We suggest you allow additional time to explore our newly refurbished galleries at the *Western Australian Museum – Albany*.

### Self-guided Experiences:

Visit our galleries in the Residency or Eclipse buildings at your own pace or immerse your students in the activity rich Discovery Centre.

## Program Costs

### Facilitated Programs:

\$4.00 per student (including GST)

### Self-guided Experiences:

Entry by donation.



## Further Information

Please refer to our website for information and resources relating to school excursions.

[www.museum.wa.gov.au/education](http://www.museum.wa.gov.au/education)

## Excursion Bookings

Western Australian Museum – Albany  
Residency Road, Albany

(08) 9841 4844

[albany@museum.wa.gov.au](mailto:albany@museum.wa.gov.au)



## K - 3 Early Childhood

### \*Beach Walk Discoveries



S

Join us at the beach to discover the secret life of sea creatures.

### \*'Nyitting' (Cold Time) Creation Stories

S&E

Minang stories of the making of Boodja (Earth).

### Pirate Mania

S&E

Prepare yourself for a day of skulduggery and hunting for treasure.

### \*We Dig Dinosaurs

S

Become a palaeontologist for the day.



## 4 - 7 Middle Childhood

### \*Caring for Boodja (Land)

S&E

How did the Minang peoples of the south coast of Western Australia provide for their needs and sustain their environment?

### Magnificent Megafauna



S

Investigate the recovery of fossilised remains of an extinct marsupial predator. (Available Semester 2)

### Landlubber to Limey

S&E

Are you tough enough to endure a day in the life of a seaman of the 18th century?

### \*Merinj for Coolangar (Food for Children)

S S&E

How did young Minang children learn about lore, hunting skills and how the six seasons were so closely related to supplies of food and medicine plants?

### Miss Crabapple's Classroom

S&E

Meet Miss Crabapple and discover what school was like for your grandparents.

### Sydney to Sound

S&E

What part of Western Australia did Great Britain take possession of and colonise in 1826 - before Perth was thought of? ... Albany!

## 8 - 10 Early Adolescence

### \*Gallipoli – The Shared Experience

LOTE S&E T&E

Who was Ataturk and why did he write a message to the mothers of fallen ANZAC troops? Experience Gallipoli from the voices of ANZAC and Turkish soldiers.

### \*Lore and Boodja (Law and Land)

S S&E

Discover how, by close observation of nature, the Minang people learnt to read the land, its animals and seasons, ensuring abundant food sources for at least 45,000 years.

### Reading the Rocks

S

Uncover the history of our land mass by learning how to 'read the rocks' as a scientist does.

### \*Wardinying (Coming Together)

S S&E

Why did Europeans travel to the 'end of the earth' to take land in the Kinjarling (Albany) region and how did this impact on the lives of the traditional owners of the land, the Minang people?

### Kinjarling (Albany)

### A Biologically Diverse Hotspot



S

Examine the natural abundance and uniquely adapted plant and animal life of this amazing region.

## 11 - 12 Late Adolescence

### Self-guided Programs

S S&E

Please visit our website for our range of self-guided topics and resources.



For more information on our programs visit us online: [www.museum.wa.gov.au/education](http://www.museum.wa.gov.au/education)



### \*Outreach Programs

All curriculum-based education activities marked with an \* are available to schools as part of our Outreach Programs.

Visit the *Western Australian Museum – Kalgoorlie-Boulder* and explore the living conditions, cultures and social lives of the people living on the goldfields.

The Museum is conveniently located on Hannan Street, and not far from one of the richest gold deposits in the world.



## Museum Highlights

- Find out how mining has played a large part in the development of the region and the state since gold was discovered in the Eastern Goldfields in 1887.
- Be charmed by our displays of gold nuggets and other gold products in the *Gold Vault*.
- Explore our range of unique buildings and displays such as a 1930's Miners Cottage, The Golden Mile and Murchison Timber Supply Company Office, the Woodline Police Office and the British Arms Hotel.
- See the Sandalwood Camp and discover how the early sandalwood pullers lived a very different lifestyle while harvesting this luxurious and valuable export product.
- Don't miss the splendour of mining entrepreneur Claude DeBernale's Perth office and Kalgoorlie boardroom from the early 1900's.



Western Australian Museum –  
Kalgoorlie-Boulder  
Hannan Street, Kalgoorlie

Open 9:30am - 4:30pm on school days  
(excluding Wednesdays)



Enhance your visit to the *Western Australian Museum – Kalgoorlie-Boulder* with one of our engaging education programs, developed by our experienced Education Team.

Our education programs include hands-on experiences which immerse students in the life of the early goldfields. Students will enjoy participating in old-fashioned games, helping with household chores and exploring innovative use of resources. Classes wishing to step further back in time can explore the discovery and recovery of extinct creatures big and small.



Teachers may also like to take advantage of the opportunity to meet with our Education Officer for an overview of the programs and resources available to supplement your teaching program.



## Excursion Options

### Facilitated Programs:

All facilitated education programs are led by an Education Officer and require booking in advance.

### Self-guided Experiences:

Visit the Museum and explore the galleries at your own pace. Our Education Officer is happy to discuss ideas for your visit. Bookings are essential.

### School Incursions:

The Education Officer at the *Western Australian Museum – Kalgoorlie-Boulder* can deliver facilitated programs within your classroom using Museum materials.

## Program Costs

### Facilitated Programs:

\$5.00 per student (including GST)

### Self-guided Experiences:

Entry by donation.



## Further Information

Please refer to our website for information and resources relating to school excursions.

[www.museum.wa.gov.au/education](http://www.museum.wa.gov.au/education)

## Excursion Bookings

Western Australian Museum –  
Kalgoorlie-Boulder  
17 Hannan Street, Kalgoorlie

(08) 9021 8533

[eomog@museum.wa.gov.au](mailto:eomog@museum.wa.gov.au)

## K - 3 Early Childhood

### Life In The Early Goldfields

A E S&E

Experience the early goldfields lifestyle through activities such as washing clothes and playing old-fashioned games.

### Innovative and Hand Made (Years 2 - 3)

S&E T&E

Discover how everyday items were reused and given another lease on life in the late 1800's. Have a go at making your own toys and other useful things.

### We Dig Dinosaurs

S

Become a palaeontologist for the day!

## 4 - 7 Middle Childhood

### Life In The Early Goldfields

A E S&E

Experience the lifestyle of the early goldfields by joining in activities such as washing clothes and playing old-fashioned games.

### Innovative and Hand Made

S&E T&E

Discover how everyday items were reused and given another lease on life in the late 1800's. Have a go at making your own toys and other useful things.

### Magnificent Megafauna

S

Investigate the recovery of fossilised remains of an extinct marsupial predator. (Available from Term 2)



Biodiversity Program

## 8 - 10 Early Adolescence

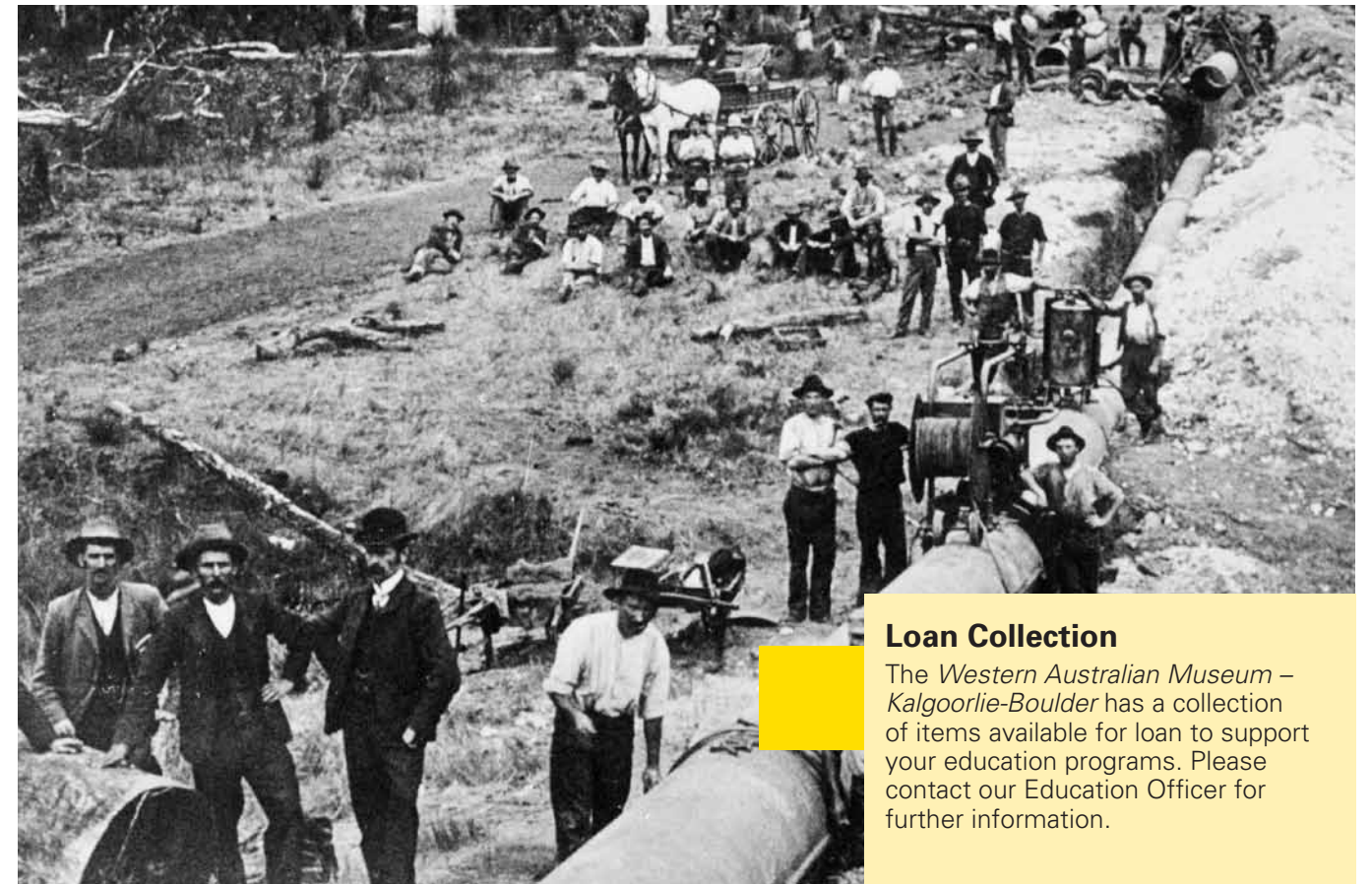
### Life In The Early Goldfields

A E S&E

Discover the lifestyle of the early Goldfields. Rediscover how thrifty and clever the people were, making best use of what they had.



For more information on our programs visit us online: [www.museum.wa.gov.au/education](http://www.museum.wa.gov.au/education)



### Loan Collection

The *Western Australian Museum – Kalgoorlie-Boulder* has a collection of items available for loan to support your education programs. Please contact our Education Officer for further information.

## Payment

You may pay using cash or cheque on the day of your visit, and a receipt will be issued. Alternatively you may provide a School Purchase Order and an invoice will be sent to you.

## Adult supervision:

We recommend the following ratios, with a minimum of two supervisors per school supervisory team.

- Years K-3, minimum 1 adult to 6 students.
- Years 4-12, minimum 1 adult to 10 students.
- Tertiary, minimum 1 supervisor with the group.

*The responsibility of children remains with the teaching staff from the visiting school or educational organisation. Please ensure that each adult supervisor is aware of their role in regards to the behaviour and safety of your students.*



## Excursion Management Plan

Please visit [www.museum.wa.gov.au/education](http://www.museum.wa.gov.au/education) for our comprehensive Excursion Management Plans which include information on emergency procedures for each site.

## Access

Please notify our staff if any students have specific access requirements, including students in wheelchairs.

All images are of the Western Australian Museum's collections, exhibitions and education programs.

© Western Australian Museum 2010

